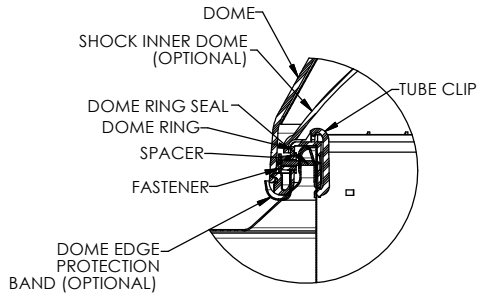
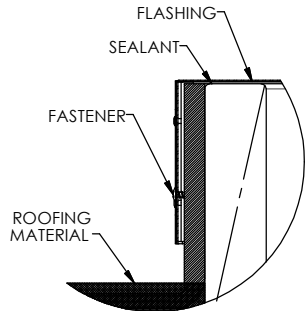


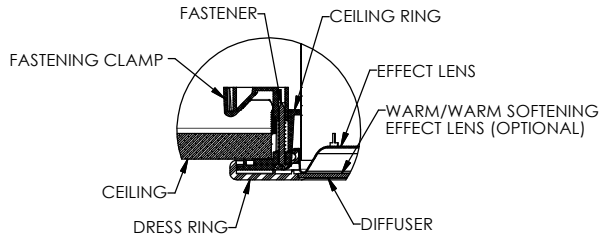
**SOLATUBE 160DS-CF-HC
(10 IN / 250 MM)
CURB CAP
HARD CEILING**



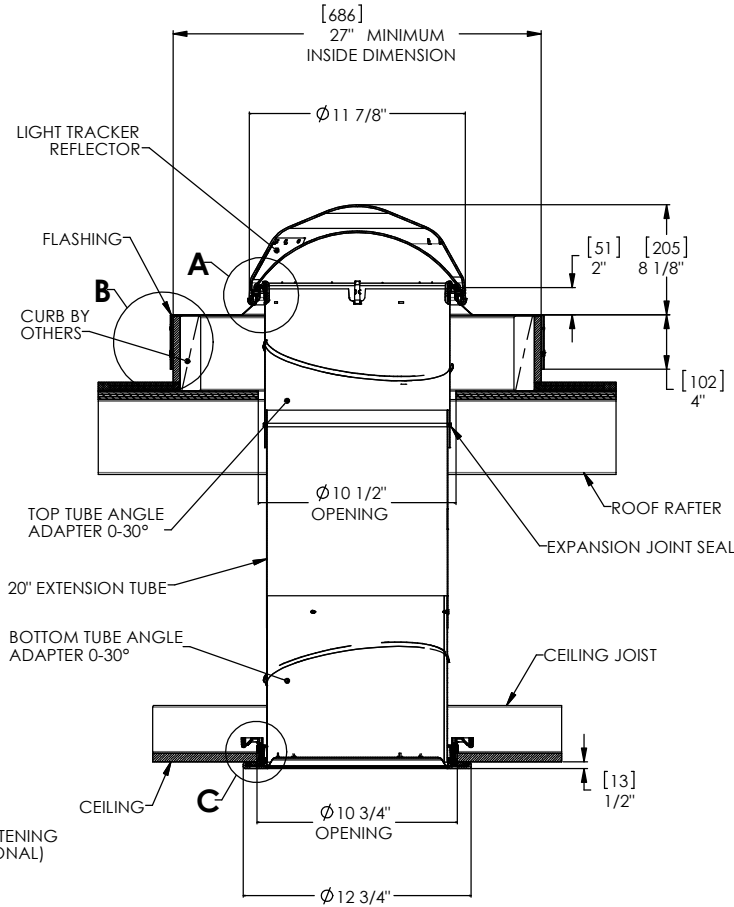
**DETAIL A
SCALE 3 : 1**



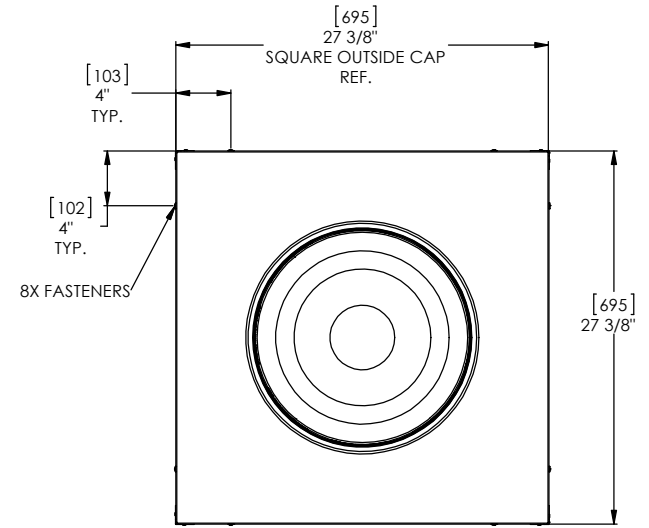
**DETAIL B
SCALE 3 : 1**



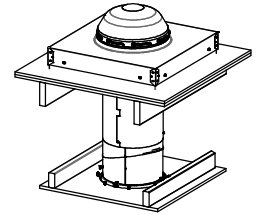
**DETAIL C
SCALE 3 : 1**



**FULL SECTION
SCALE 1:1**



TOP VIEW



NOTES:

1. STRUCTURAL ELEMENTS (PLYWOOD, RAFTERS, DRYWALL ETC. BY OTHERS & SHOWN FOR REFERENCE ONLY).
2. ALL TUBE JOINTS & SEAMS TAPED WITH 2" FOIL TAPE (NOT SHOWN).
3. DIMENSIONS IN BRACKETS ARE METRIC UNLESS OTHERWISE SPECIFIED.
4. 6" MIN CLEARANCE SHOULD BE MAINTAINED FROM ALL SOLATUBE COMPONENTS AND OTHER PLENUM COMPONENTS.

UNLESS OTHERWISE SPECIFIED:		SOLATUBE INTERNATIONAL INC. COPYRIGHT 2013 WWW.SOLATUBE.COM		 2015 DAK RODEE WAY DORTA, CALIFORNIA 92081-8341 PH (760) 977-4400	
DIMENSION TOLERANCE FRACTIONS ± 1/4" DASH MILLIMETER X ± .1 [X] ± 2.5 XX ± .06 [XX] ± 1.5		DRAWN BY STEVENS		DATE 10/4/10	
MATERIAL -		CHECKED BY -		DATE -	
FINISH -		APPROVED BY -		DATE -	
DO NOT SCALE DRAWING		-		-	
TITLE: SOLATUBE 160 DS CURB CAP HARD CEILING				SIZE D	REV 1
DWG. NO. 160DS-CF-HC				SCALE: 1:1	SHEET 1 OF 1