

# **SOLATUBE INTERNATIONAL, INC.**

## **TEST REPORT**

**SCOPE OF WORK**

FM 4473 IMPACT RESISTANCE TESTING OF SL5252 SKYLIGHT

**REPORT NUMBER**

P8519.01-801-44 R0

**TEST DATE**

04/13/23

**ISSUE DATE**

04/20/23

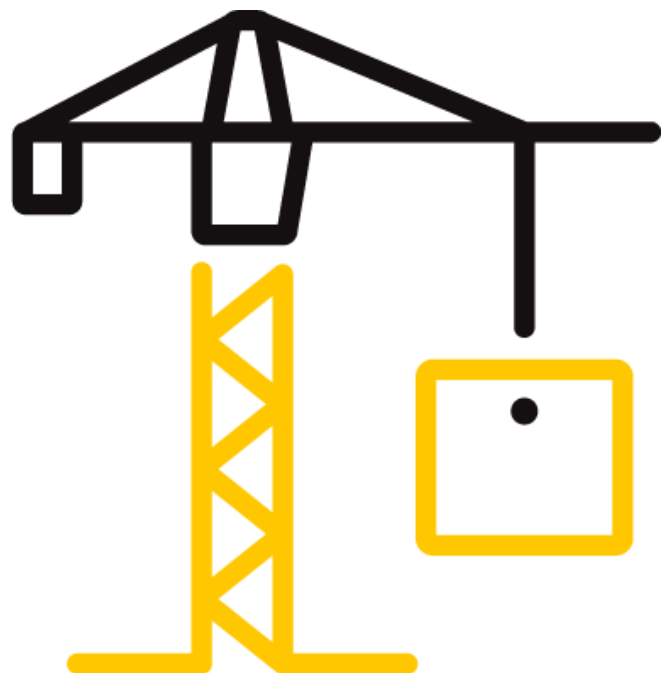
**PAGES**

18

**DOCUMENT CONTROL NUMBER**

RT-R-AMER-Test-2957 (11/28/22)

© 2017 INTERTEK



## TEST REPORT FOR SOLATUBE INTERNATIONAL, INC.

Report No.: P8519.01-801-44 R0

Date: 04/20/23

### REPORT ISSUED TO

#### SOLATUBE INTERNATIONAL, INC.

2210 Oak Ridge Way  
Vista, California 92081

### SECTION 1

#### SCOPE

Architectural Testing, Inc. (an Intertek company) dba Intertek Building & Construction (B&C) was contracted by Solatube International, Inc. to perform impact resistance testing in accordance with FM 4473 on their SL5252 SKYLIGHT. Results obtained are tested values and were secured by using the designated test method(s). Testing was conducted at Intertek B&C test facility in Plano, TX

Unless differently required, Intertek reports apply the "Simple Acceptance" rule also called "Shared Risk approach," of ILAC-G8:09/2019, Guidelines on Decision Rules and Statements of Conformity.

This report does not constitute certification of this product nor an opinion or endorsement by this laboratory. Intertek B&C will service this report for the entire test record retention period. The test record retention period ends four years after the test date. Test records, such as detailed drawings, datasheets, representative samples of test specimens, or other pertinent project documentation, will be retained for the entire test record retention period.

### SECTION 2

#### SUMMARY OF TEST RESULTS

**Product Type:**

**Series/Model:**

**Product Classification Achieved:** Class 4

For INTERTEK B&C:

<b>COMPLETED BY:</b>	Lucio "Fred" Muñoz
<b>TITLE:</b>	Project Manager
<b>SIGNATURE:</b>	
<b>DATE:</b>	04/20/23

<b>REVIEWED BY:</b>	Jeff Crump, FMPC
<b>TITLE:</b>	Lab Manager
<b>SIGNATURE:</b>	
<b>DATE:</b>	04/20/23

LFM:jc/cm

This report is for the exclusive use of Intertek's Client and is provided pursuant to the agreement between Intertek and its Client. Intertek's responsibility and liability are limited to the terms and conditions of the agreement. Intertek assumes no liability to any party, other than to the Client in accordance with the agreement, for any loss, expense or damage occasioned by the use of this report. Only the Client is authorized to permit copying or distribution of this report and then only in its entirety. Any use of the Intertek name or one of its marks for the sale or advertisement of the tested material, product or service must first be approved in writing by Intertek. The observations and test results in this report are relevant only to the sample(s) tested. This report by itself does not imply that the material, product, or service is or has ever been under an Intertek certification program.

## TEST REPORT FOR SOLATUBE INTERNATIONAL, INC.

Report No.: P8519.01-801-44 R0

Date: 04/20/23

### SECTION 3

#### TEST METHOD(S)

The specimens were evaluated in general accordance with the following:

**ANSI/FM 4473-2011 (R2020)**, *American National Standard for Impact Resistance Testing of Rigid Roofing Materials by Impacting with Freezer Ice Balls*

### SECTION 4

#### MATERIAL SOURCE/INSTALLATION

Test specimen was provided by the client. Representative samples of the test specimen(s) will be retained by Intertek B&C for a minimum of four years from the test completion date.

Installation of the tested product was performed by Intertek. The 51-3/4" x 51-3/4" specimen was anchored to a 60" x 36" wood deck by bracing the skylight against a wooden batten and securing it in place with a ratcheting strap.

### SECTION 5

#### EQUIPMENT

**Cannon:** Constructed from steel piping utilizing compressed air to propel the missile

**Missile:** 50.8 mm (2.0") diameter ice balls

**Cannon Identification Number:** 005469

**Timing Device:** Electronic Beam Type

**Timing Device Calibration Date:** 3/29/23

### SECTION 6

#### LIST OF OFFICIAL OBSERVERS

NAME	COMPANY
Todd Anderson	Solatube International, Inc.
Fred Muñoz	Intertek B&C

**TEST REPORT FOR SOLATUBE INTERNATIONAL, INC.**

Report No.: P8519.01-801-44 R0

Date: 04/20/23

**SECTION 7****TEST SPECIMEN DESCRIPTION****Product Type:** Aluminum-Framed Skylight with Insulating Glass Assembly Insert**Series/Model:** SL5252**Color:** Brown**Finish:** Painted**Overall Assembly Size:** 1314 mm (51-3/4") width by 1314 mm (51-3/4") length**Daylight Opening Size:** 1143 mm (45") width by 1143 mm (45") length**Nominal Thickness – Insulating Glass Assembly:** 23 mm (15/16")**Frame Thickness:** 2 mm (0.0675")**Deck Construction**

The wood test deck was 3' wide x 4' high and constructed with 2x4 pine construction lumber at the perimeter with one stud located at the midspan. The test deck was covered with 15/32" thick plywood decking secured to the test deck with #6 x 1-5/8" screws located 2" from each end and on 6" centers.

**Specimen Construction**

The skylight was constructed of an insulating glass assembly mounted in an aluminum frame. The 51-1/2" x 51-1/2" assembly is secured in place by a rigid PVC extrusion attached to the frame by aluminum rivets. The insulating glass assembly is comprised of an exterior lite of clear, 4 mm tempered lite, a 12.5 mm spacer, and an interior lite of laminated glass. The laminated lite is two 3 mm clear annealed lites with an interlayer of 0.03" polyvinyl butyral.

## TEST REPORT FOR SOLATUBE INTERNATIONAL, INC.

Report No.: P8519.01-801-44 R0

Date: 04/20/23

### SECTION 8

#### TEST RESULTS

##### FM 4473, Ice Ball Impact Resistance

**Sample Conditioning Temperature:** 22°C (72°F) for at least 4 hours

**Sample Conditioning Relative Humidity:** 52% for at least 4 hours

**Ice Ball Conditioning Temperature:** -23°C (-10°F) for at least 48 hours

**Muzzle Distance from Test Specimen:** 914 mm (36")

The ambient temperature during testing was 22°C (71°F). The results are tabulated as follows.

##### Test Unit #1

IMPACT	MISSILE VELOCITY m/s (fps)	ORIENTATION	WEIGHT g (lbs)	DIAMETER mm (in.)	ENERGY ft-lb	IMPACT AREA	OBSERVATIONS	RESULTS
1	32.4 (106.3)	15° of vertical	63.6 (0.140)	50.8 (2.0)	24.63	Top left corner, 2" from each edge	No visible cracking or breakage	Pass
2	32.6 (106.9)	15° of vertical	64.7 (0.143)	50.8 (2.0)	25.33	Top left corner, 2" from each edge	No visible cracking or breakage	Pass
3	32.7 (107.3)	15° of vertical	63.3 (0.140)	50.8 (2.0)	24.97	Top middle, 2" from edge	No visible cracking or breakage	Pass
4	32.2 (105.7)	15° of vertical	66.1 (0.146)	50.8 (2.0)	25.30	Top middle, 2" from edge	No visible cracking or breakage	Pass
5	32.2 (105.7)	15° of vertical	64.7 (0.143)	50.8 (2.0)	24.77	Center, 24-1/2" from each edge	No visible cracking or breakage	Pass
6	32.4 (106.3)	15° of vertical	65.5 (0.144)	50.8 (2.0)	25.36	Center, 24-1/2" from each edge	No visible cracking or breakage	Pass

**TEST REPORT FOR SOLATUBE INTERNATIONAL, INC.**

Report No.: P8519.01-801-44 R0

Date: 04/20/23

**Test Unit #1**

IMPACT	MISSILE VELOCITY m/s (fps)	ORIENTATION	WEIGHT g (lbs)	DIAMETER mm (in.)	ENERGY ft-lb	IMPACT AREA	OBSERVATIONS	RESULTS
7	32.4 (106.3)	15° of vertical	64.9 (0.143)	50.8 (2.0)	25.13	Right middle, 4" from right edge and 24-1/2" from bottom edge	No visible cracking or breakage	Pass
8	32.1 (105.3)	15° of vertical	62.9 (0.139)	50.8 (2.0)	23.90	Right middle, 4" from right edge and 24-1/2" from bottom edge	No visible cracking or breakage	Pass
9	32.4 (106.4)	15° of vertical	64.5 (0.142)	50.8 (2.0)	25.02	Bottom right corner, 4" from each edge	No visible cracking or breakage	Pass
10	32.6 (106.9)	15° of vertical	65.7 (0.145)	50.8 (2.0)	25.73	Bottom right corner, 4" from each edge	No visible cracking or breakage	Pass
11	31.9 (104.5)	15° of vertical	63.5 (0.140)	50.8 (2.0)	23.76	Bottom left, 12- 1/4" from each edge	No visible cracking or breakage	Pass
12	32.6 (106.9)	15° of vertical	65.1 (0.144)	50.8 (2.0)	25.49	Bottom left, 12- 1/4" from each edge	No visible cracking or breakage	Pass



Total Quality. Assured.

1909 10th Street, Suite 100  
Plano, Texas 75074

Telephone: 469-814-0687  
[www.intertek.com/building](http://www.intertek.com/building)

## **TEST REPORT FOR SOLATUBE INTERNATIONAL, INC.**

Report No.: P8519.01-801-44 R0

Date: 04/20/23

### **SECTION 9**

#### **CONCLUSION**

The sample tested met the performance requirements set forth in the referenced test procedures for a Class 4.

## TEST REPORT FOR SOLATUBE INTERNATIONAL, INC.

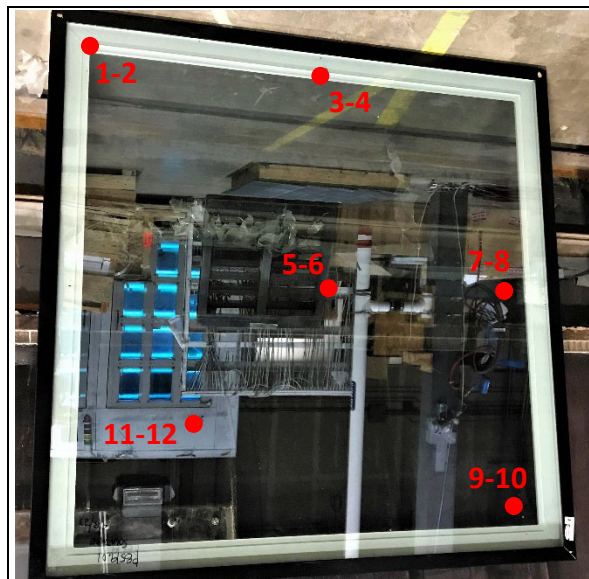
Report No.: P8519.01-801-44 R0

Date: 04/20/23

### SECTION 10 PHOTOGRAPHS



**Photo No. 1**  
**Specimen Anchored to Deck**



**Photo No. 2**  
**Locations of Impacts**





Total Quality. Assured.

1909 10th Street, Suite 100  
Plano, Texas 75074

Telephone: 469-814-0687  
[www.intertek.com/building](http://www.intertek.com/building)

## TEST REPORT FOR SOLATUBE INTERNATIONAL, INC.

Report No.: P8519.01-801-44 R0

Date: 04/20/23

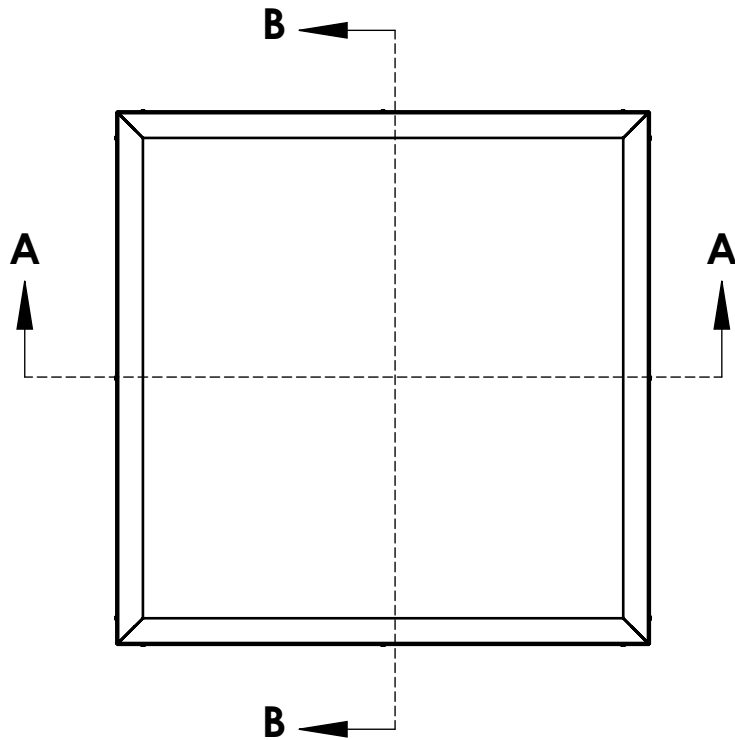
### SECTION 11

#### DRAWINGS

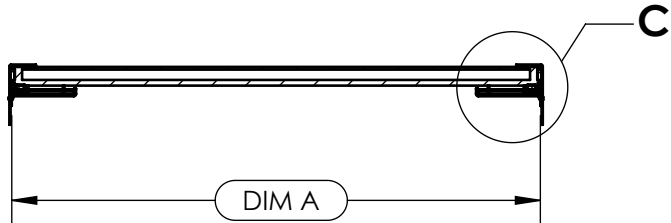
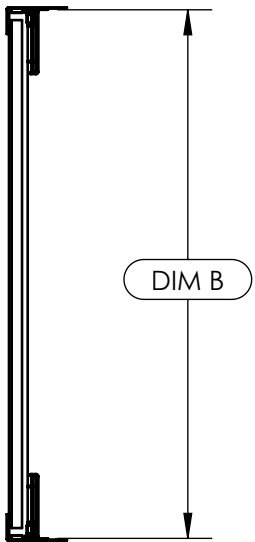
The test specimen drawings have been reviewed by Intertek B&C and are representative of the test specimen(s) reported herein. Test specimen construction was verified by Intertek B&C per the drawings included in this report. Any deviations are documented herein or on the drawings.

**Note:** *Complete drawings packet on file with Intertek B&C.*

HSE FIXED SERIES

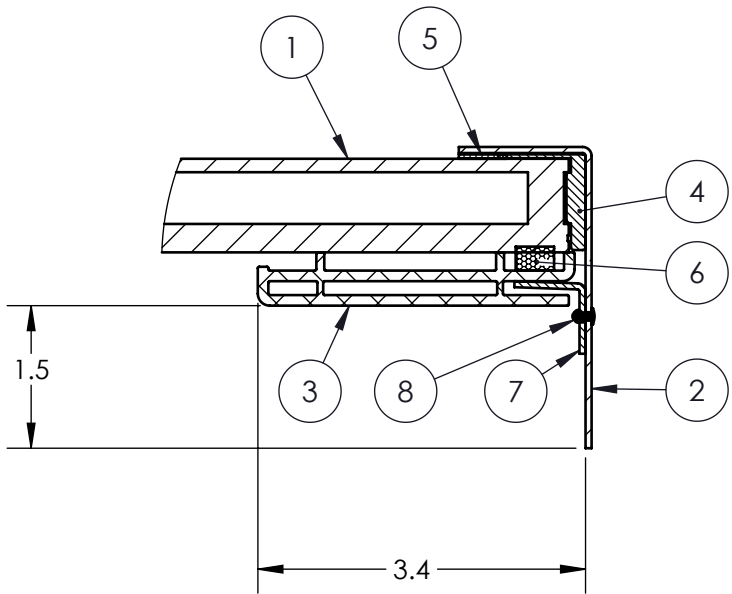


SECTION B-B





SECTION A-A

CURB MOUNT FIXED SKYLIGHT			
ITEM NO.	PART NO.	DESCRIPTION	MATERIAL
1	VARIES	INSULATED GLASS ASSEMBLY	
2	VARIES	BASE FLANGE	PAINTED ALUMINUM ALLOY
3	381091	BASE EXTRUSION PROFILE	RIGID PVC
4	700358	SEALANT	POLYURETHANE
5	620025	TAPE ACRYLIC FOAM	FOAM
6	381076	CLOSED CELL FOAM	FOAM
7	VARIES	CLEAT	PAINTED ALUMINUM ALLOY
8	700048	RIVET	ALUMINUM ALLOY
9	831162	CORNER CONNECTOR (NOT SHOWN)	PAINTED STEEL
10	381126	SPACER (NOT SHOWN)	NYLON
11	700480	SCREW #10 X 2" (NOT SHOWN)	STEEL



DETAIL C

	Report #:	P8519.01-801-44
	Date:	04/18/23
	Verified by:	L Munoz

UNLESS OTHERWISE SPECIFIED:		PROPRIETARY AND CONFIDENTIAL		<div> <b>SOLATUBE®</b> 2210 OAK RIDGE WAY VISTA, CALIFORNIA 92081-8341 PH (760) 597-4400</div>			
TOLERANCES ANGULAR: ±0.5° INCH <u>MILLIMETER</u> .X ± .06                      [.X] ± 1.5 .XX ± .01                      [.XX] ± .25 .XXX ± .005                      [.XXX] ± .125		THE INFORMATION CONTAINED IN THIS DRAWING IS THE SOLE PROPERTY OF SOLATUBE. ANY REPRODUCTION IN PART OR AS A WHOLE WITHOUT THE WRITTEN PERMISSION OF SOLATUBE IS PROHIBITED.		TITLE:  <b>CURB MOUNT FIXED SKYLIGHT</b>			
MATERIAL -- --		DRAWN BY STEVENS	DATE 8 JUL 19	SIZE  <b>B</b>	PROJECTION   (3rd)	DWG. NO.  <b>HSE-FS</b>	REV  <b>2</b>
FINISH -- --		CHECKED BY --	DATE --		UNIT INCH [MM]	SCALE: 1:10	SHEET 1 OF 2
DO NOT SCALE DRAWING		INTERPRET DRAWINGS IAW: ASME Y14.5 - 1994					

87654321

FIXED SKYLIGHT MODEL NUMBERS					
NO.	MODEL		NO.	MODEL	
1	SL2020-F		32	SL2541-F	
2	SL2023-F		33	SL2543-F	
3	SL2025-F		34	SL2546-F	
4	SL2028-F		35	SL2549-F	
5	SL2031-F		36	SL2552-F	
6	SL2033-F		37	SL2828-F	
7	SL2036-F		38	SL2831-F	
8	SL2039-F		39	SL2833-F	
9	SL2041-F		40	SL2836-F	
10	SL2043-F		41	SL2839-F	
11	SL2046-F		42	SL2841-F	
12	SL2049-F		43	SL2843-F	
13	SL2052-F		44	SL2846-F	
14	SL2323-F		45	SL2849-F	
15	SL2325-F		46	SL2852-F	
16	SL2328-F		47	SL3131-F	
17	SL2331-F		48	SL3133-F	
18	SL2333-F		49	SL3136-F	
19	SL2336-F		50	SL3139-F	
20	SL2339-F		51	SL3141-F	
21	SL2341-F		52	SL3143-F	
22	SL2343-F		53	SL3146-F	
23	SL2346-F		54	SL3149-F	
24	SL2349-F		55	SL3152-F	
25	SL2352-F		56	SL3333-F	
26	SL2525-F		57	SL3336-F	
27	SL2528-F		58	SL3339-F	
28	SL2531-F		59	SL3341-F	
29	SL2533-F		60	SL3343-F	
30	SL2536-F		61	SL3346-F	
31	SL2539-F		62	SL3349-F	

MODEL NUMBER KEY			
SKYLIGHT	SIDE A	SIDE B	FIXED
SL	XX	XX	-F

SIDE A/B	DIM A/B
20	20.030
23	22.530
25	25.030
28	27.530
31	30.405
33	33.155
36	36.030
39	38.530
41	40.530
43	43.030
46	45.905
49	48.780
52	51.530
55	54.530
58	57.530
61	60.530
64	63.530
67	66.530
70	69.530
73	72.530
76	75.530
79	78.530
82	81.530
85	84.530

D

C

B

A

87654321

FIXED SKYLIGHT MODEL NUMBERS					
NO.	MODEL		NO.	MODEL	
1	SL2020-F		32	SL2541-F	
2	SL2023-F		33	SL2543-F	
3	SL2025-F		34	SL2546-F	
4	SL2028-F		35	SL2549-F	
5	SL2031-F		36	SL2552-F	
6	SL2033-F		37	SL2828-F	
7	SL2036-F		38	SL2831-F	
8	SL2039-F		39	SL2833-F	
9	SL2041-F		40	SL2836-F	
10	SL2043-F		41	SL2839-F	
11	SL2046-F		42	SL2841-F	
12	SL2049-F		43	SL2843-F	
13	SL2052-F		44	SL2846-F	
14	SL2323-F		45	SL2849-F	
15	SL2325-F		46	SL2852-F	
16	SL2328-F		47	SL3131-F	
17	SL2331-F		48	SL3133-F	
18	SL2333-F		49	SL3136-F	
19	SL2336-F		50	SL3139-F	
20	SL2339-F		51	SL3141-F	
21	SL2341-F		52	SL3143-F	
22	SL2343-F		53	SL3146-F	
23	SL2346-F		54	SL3149-F	
24	SL2349-F		55	SL3152-F	
25	SL2352-F		56	SL3333-F	
26	SL2525-F		57	SL3336-F	
27	SL2528-F		58	SL3339-F	
28	SL2531-F		59	SL3341-F	
29	SL2533-F		60	SL3343-F	
30	SL2536-F		61	SL3346-F	
31	SL2539-F		62	SL3349-F	

MODEL NUMBER KEY			
SKYLIGHT	SIDE A	SIDE B	FIXED
SL	XX	XX	-F

SIDE A/B	DIM A/B
20	20.030
23	22.530
25	25.030
28	27.530
31	30.405
33	33.155
36	36.030
39	38.530
41	40.530
43	43.030
46	45.905
49	48.780
52	51.530
55	54.530
58	57.530
61	60.530
64	63.530
67	66.530
70	69.530
73	72.530
76	75.530
79	78.530
82	81.530
85	84.530

D

C

B

A

intertek

Total Quality. Assured.

Report #:

P8519.01-801-44

Date:

04/18/23

Verified by:

L Munoz

TITLE:

CURB MOUNT FIXED SKYLIGHT

SIZE

B

DWG. NO.

HSE-FS

REV

2

SCALE: 1:5

SHEET 2 OF 2

87654321

FIXED SKYLIGHT MODEL NUMBERS					
NO.	MODEL		NO.	MODEL	
1	SL2020-F		32	SL2541-F	
2	SL2023-F		33	SL2543-F	
3	SL2025-F		34	SL2546-F	
4	SL2028-F		35	SL2549-F	
5	SL2031-F		36	SL2552-F	
6	SL2033-F		37	SL2828-F	
7	SL2036-F		38	SL2831-F	
8	SL2039-F		39	SL2833-F	
9	SL2041-F		40	SL2836-F	
10	SL2043-F		41	SL2839-F	
11	SL2046-F		42	SL2841-F	
12	SL2049-F		43	SL2843-F	
13	SL2052-F		44	SL2846-F	
14	SL2323-F		45	SL2849-F	
15	SL2325-F		46	SL2852-F	
16	SL2328-F		47	SL3131-F	
17	SL2331-F		48	SL3133-F	
18	SL2333-F		49	SL3136-F	
19	SL2336-F		50	SL3139-F	
20	SL2339-F		51	SL3141-F	
21	SL2341-F		52	SL3143-F	
22	SL2343-F		53	SL3146-F	
23	SL2346-F		54	SL3149-F	
24	SL2349-F		55	SL3152-F	
25	SL2352-F		56	SL3333-F	
26	SL2525-F		57	SL3336-F	
27	SL2528-F		58	SL3339-F	
28	SL2531-F		59	SL3341-F	
29	SL2533-F		60	SL3343-F	
30	SL2536-F		61	SL3346-F	
31	SL2539-F		62	SL3349-F	

MODEL NUMBER KEY			
SKYLIGHT	SIDE A	SIDE B	FIXED
SL	XX	XX	-F

SIDE A/B	DIM A/B
20	20.030
23	22.530
25	25.030
28	27.530
31	30.405
33	33.155
36	36.030
39	38.530
41	40.530
43	43.030
46	45.905
49	48.780
52	51.530
55	54.530
58	57.530
61	60.530
64	63.530
67	66.530
70	69.530
73	72.530
76	75.530
79	78.530
82	81.530
85	84.530

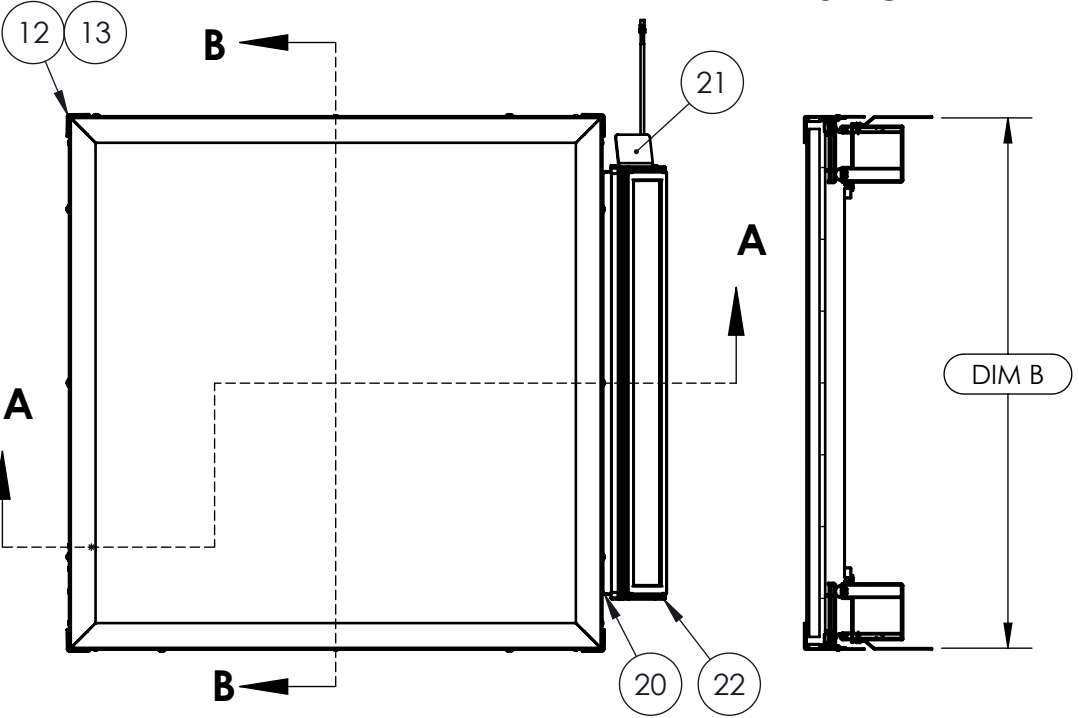
D

C

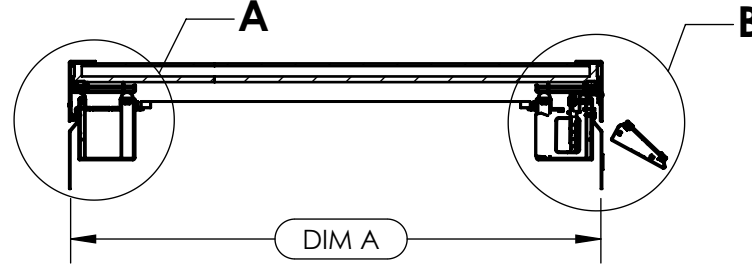
B

A

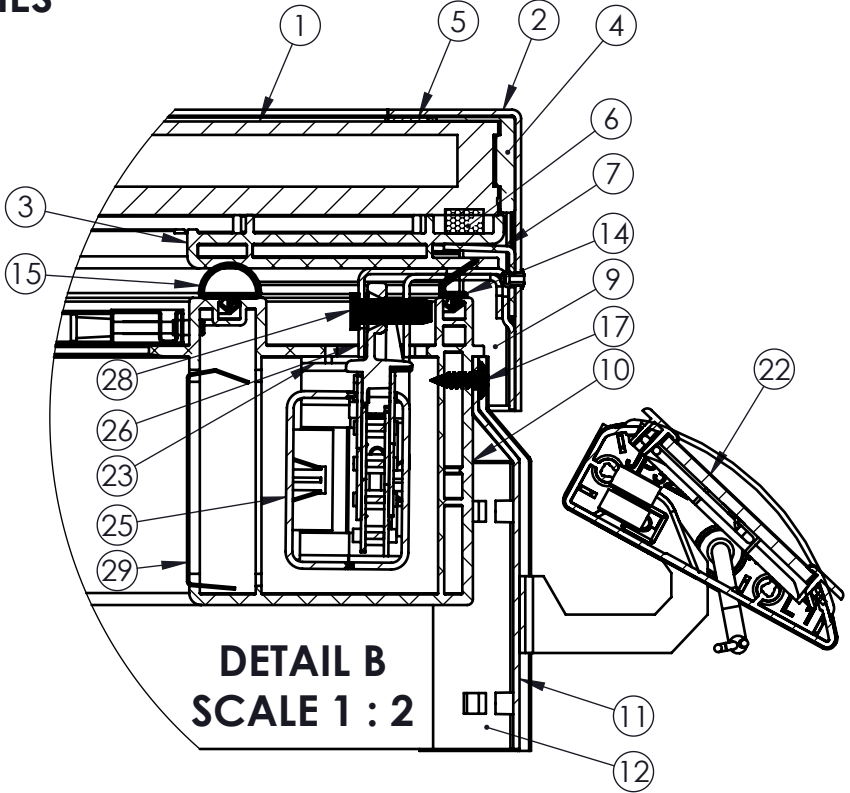
HSE OPERABLE SERIES



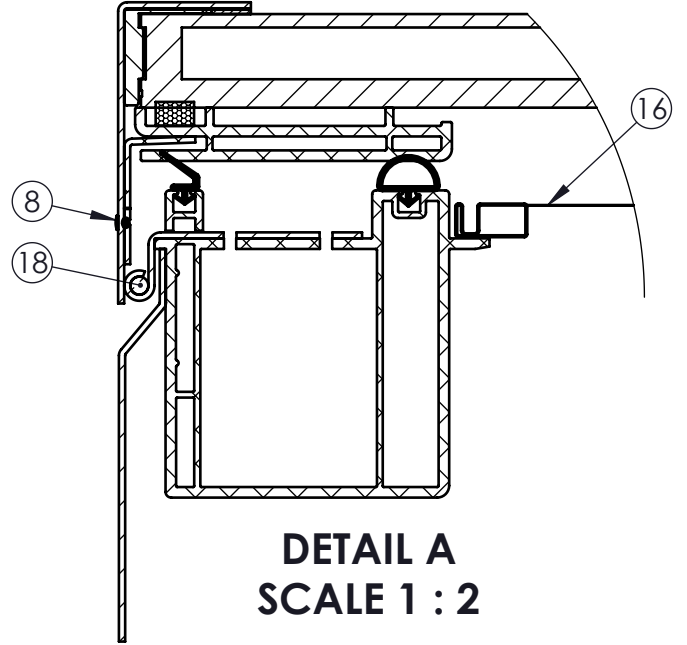
SECTION B-B



SECTION A-A



DETAIL B  
SCALE 1 : 2



DETAIL A  
SCALE 1 : 2

CURB MOUNT FIXED SKYLIGHT			
ITEM NO.	PART NO.	DESCRIPTION	MATERIAL
1	VARIES	INSULATED GLASS ASSEMBLY	
2	VARIES	BASE FLANGE	PAINTED ALUMINUM ALLOY
3	381091	BASE EXTRUSION PROFILE	RIGID PVC
4	700358	SEALANT	POLYURETHANE
5	620025	TAPE ACRYLIC FOAM	FOAM
6	381076	CLOSED CELL FOAM	FOAM
7	VARIES	CLEAT	PAINTED ALUMINUM ALLOY
8	700048	RIVET	ALUMINUM ALLOY
9	831162	CORNER CONNECTOR (NOT SHOWN)	PAINTED STEEL

OPERABLE SKYLIGHT			
ITEM NO.	PART NO.	DESCRIPTION	MATERIAL
10	381083	EXTRUSION SKYLIGHT OPERABLE	RIGID PVC
11	VARIES	OPERABLE FLASH	PAINTED ALUMINUM ALLOY
12	381115	CORNER CONNECTOR	ASA
13	381121	CORNER BINDER (NOT SHOWN)	ASA
14	600235	SEAL FIN	TPE RUBBER
15	600304	SEAL HOLLOW 'D'	TPE RUBBER
16	VARIES	SCREEN	ALUMINUM / FIBERGLASS
17	720093	SCREW #8 X 1/2"	STAINLESS STEEL
18	381410	HINGE	STAINLESS STEEL
19	520050	RIVET	STEEL
20	382033	PV PANEL MOUNTING BRACKET	STAINLESS STEEL
21		RAIN SENSOR BRACKET	STAINLESS STEEL
22	381050	SKYLIGHT SOLAR PANEL ASSEMBLY	N/A
23	381208	MOTOR BRACKET	STAINLESS STEEL
24	700635	RIVET (FOR MOTOR BRACKET)	ALUMINUM
25	381130	MOTOR AND CHAIN ASSY.	N/A
26	382055	CHAIN CONNECTOR ASSY	STAINLESS STEEL
27	381320	RAIN SENSOR (NOT SHOWN)	N/A
28	381201	CLEVIS PIN	STEEL
29	381053	MOTOR COVER COATED	PAINTED STEEL




Report #: P8519.01-801-44  
Date: 04/18/23  
Verified by: L Munoz

UNLESS OTHERWISE SPECIFIED:  
TOLERANCES  
ANGULAR: ±0.5°  
INCH  
.X ± .06  
.XX ± .01  
.XXX ± .005  
MILLIMETER  
[.X] ± 1.5  
[.XX] ± .25  
[.XXX] ± .125  
MATERIAL  
--  
--  
FINISH  
--  
--  
DO NOT SCALE DRAWING

PROPRIETARY AND CONFIDENTIAL  
THE INFORMATION CONTAINED IN THIS DRAWING IS THE SOLE PROPERTY OF SOLATUBE. ANY REPRODUCTION IN PART OR AS A WHOLE WITHOUT THE WRITTEN PERMISSION OF SOLATUBE IS PROHIBITED.  
DRAWN BY  
STEVENS  
CHECKED BY  
--  
INTERPRET DRAWINGS IAW:  
ASME Y14.5 - 1994

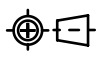
DATE  
8 JUL 19  
DATE  
--



2210 OAK RIDGE WAY  
VISTA, CALIFORNIA 92081-8341  
PH (760) 597-4400

TITLE:  
**CURB MOUNT OPERABLE SKYLIGHT**

SIZE  
**B**

PROJECTION  
 (3rd)

DWG. NO.  
**HSE-OS**

REV  
**2**

UNIT INCH [MM]  
SCALE: 1:10

SHEET 1 OF 2

87654321

D

C


B

A

OVERSIZED SKYLIGHT MODEL NUMBERS							
NO.	MODEL		NO.	MODEL		NO.	MODEL
1	SL2055-F		45	SL3155-F		89	SL4155-F
2	SL2058-F		46	SL3158-F		90	SL4158-F
3	SL2061-F		47	SL3161-F		91	SL4161-F
4	SL2064-F		48	SL3164-F		92	SL4164-F
5	SL2067-F		49	SL3167-F		93	SL4167-F
6	SL2070-F		50	SL3170-F		94	SL4170-F
7	SL2073-F		51	SL3173-F		95	SL4173-F
8	SL2076-F		52	SL3176-F		96	SL4176-F
9	SL2079-F		53	SL3179-F		97	SL4179-F
10	SL2082-F		54	SL3182-F		98	SL4182-F
11	SL2085-F		55	SL3185-F		99	SL4185-F
12	SL2355-F		56	SL3355-F		100	SL4355-F
13	SL2358-F		57	SL3358-F		101	SL4358-F
14	SL2361-F		58	SL3361-F		102	SL4361-F
15	SL2364-F		59	SL3364-F		103	SL4364-F
16	SL2367-F		60	SL3367-F		104	SL4367-F
17	SL2370-F		61	SL3370-F		105	SL4370-F
18	SL2373-F		62	SL3373-F		106	SL4373-F
19	SL2376-F		63	SL3376-F		107	SL4376-F
20	SL2379-F		64	SL3379-F		108	SL4379-F
21	SL2382-F		65	SL3382-F		109	SL4382-F
22	SL2385-F		66	SL3385-F		110	SL4385-F
23	SL2555-F		67	SL3655-F		111	SL4655-F
24	SL2558-F		68	SL3658-F		112	SL4658-F
25	SL2561-F		69	SL3661-F		113	SL4661-F
26	SL2564-F		70	SL3664-F		114	SL4664-F
27	SL2567-F		71	SL3667-F		115	SL4667-F
28	SL2570-F		72	SL3670-F		116	SL4670-F
29	SL2573-F		73	SL3673-F		117	SL4673-F
30	SL2576-F		74	SL3676-F		118	SL4676-F
31	SL2579-F		75	SL3679-F		119	SL4679-F
32	SL2582-F		76	SL3682-F		120	SL4682-F
33	SL2585-F		77	SL3685-F		121	SL4685-F
34	SL2855-F		78	SL3955-F		122	SL4955-F
35	SL2858-F		79	SL3958-F		123	SL4958-F
36	SL2861-F		80	SL3961-F		124	SL4961-F
37	SL2864-F		81	SL3964-F		125	SL4964-F
38	SL2867-F		82	SL3967-F		126	SL4967-F
39	SL2870-F		83	SL3970-F		127	SL4970-F
40	SL2873-F		84	SL3973-F		128	SL4973-F
41	SL2876-F		85	SL3976-F		129	SL4976-F
42	SL2879-F		86	SL3979-F		130	SL4979-F
43	SL2882-F		87	SL3982-F		131	SL4982-F
44	SL2885-F		88	SL3985-F		132	SL4985-F
						133	SL5255-F
						134	SL5258-F
						135	SL5261-F
						136	SL5264-F
						137	SL5267-F
						138	SL5270-F
						139	SL5273-F
						140	SL5276-F
						141	SL5279-F
						142	SL5282-F
						143	SL5285-F
						144	SL5555-F
						145	SL5558-F
						146	SL5561-F
						147	SL5564-F
						148	SL5567-F
						149	SL5570-F
						150	SL5573-F
						151	SL5576-F
						152	SL5579-F
						153	SL5582-F
						154	SL5585-F
						155	SL5855-F
						156	SL5858-F
						157	SL5861-F
						158	SL5864-F
						159	SL5867-F
						160	SL5870-F
						161	SL5873-F
						162	SL5876-F
						163	SL5879-F
						164	SL5882-F
						165	SL5885-F
						166	SL6155-F
						167	SL6158-F
						168	SL6161-F
						169	SL6164-F
						170	SL6167-F
						171	SL6170-F
						172	SL6173-F
						173	SL6176-F
						174	SL6179-F
						175	SL6182-F
						176	SL6185-F

MODEL NUMBER KEY			
SKYLIGHT	SIDE A	SIDE B	FIXED
SL	XX	XX	-F

SIDE A/B	DIM A/B
20	20.030
23	22.530
25	25.030
28	27.530
31	30.405
33	33.155
36	36.030
39	38.530
41	40.530
43	43.030
46	45.905
49	48.780
52	51.530
55	54.530
58	57.530
61	60.530
64	63.530
67	66.530
70	69.530
73	72.530
76	75.530
79	78.530
82	81.530
85	84.530

Total Quality Assured.

Report #: P8519.01-801-44  
Date: 04/18/23  
Verified by: L Munoz

TITLE: <b>CURB MOUNT OPERABLE SKYLIGHT</b>		
SIZE <b>B</b>	DWG. NO. <b>HSE-OS</b>	REV <b>2</b>
	SCALE: 1:10      SHEET 2 OF 2	

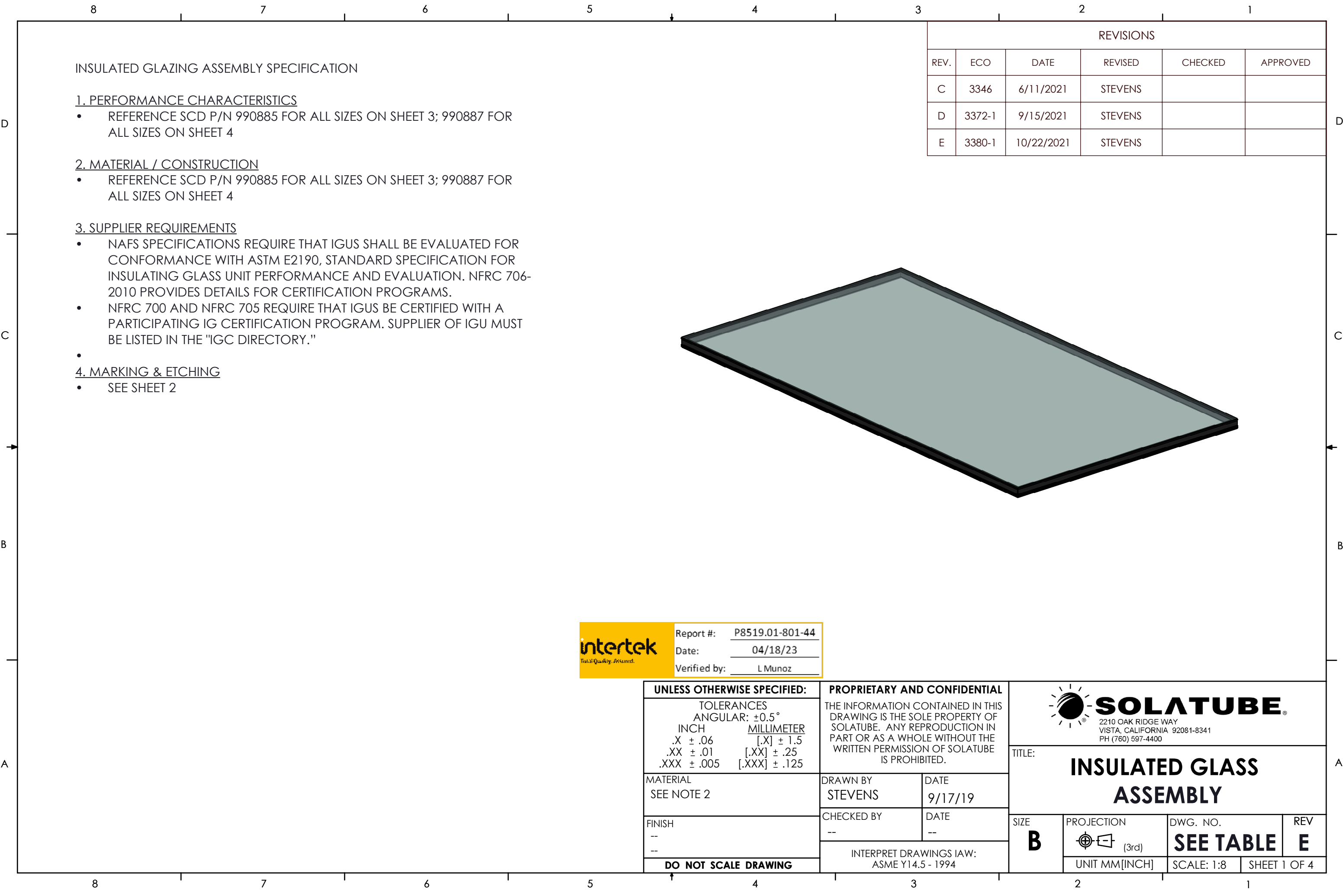
87654321

D

C

B

A



INSULATED GLAZING ASSEMBLY SPECIFICATION

1. PERFORMANCE CHARACTERISTICS

- REFERENCE SCD P/N 990885 FOR ALL SIZES ON SHEET 3; 990887 FOR ALL SIZES ON SHEET 4

2. MATERIAL / CONSTRUCTION

- REFERENCE SCD P/N 990885 FOR ALL SIZES ON SHEET 3; 990887 FOR ALL SIZES ON SHEET 4

3. SUPPLIER REQUIREMENTS

- NAFS SPECIFICATIONS REQUIRE THAT IGUS SHALL BE EVALUATED FOR CONFORMANCE WITH ASTM E2190, STANDARD SPECIFICATION FOR INSULATING GLASS UNIT PERFORMANCE AND EVALUATION. NFRC 706-2010 PROVIDES DETAILS FOR CERTIFICATION PROGRAMS.
- NFRC 700 AND NFRC 705 REQUIRE THAT IGUS BE CERTIFIED WITH A PARTICIPATING IG CERTIFICATION PROGRAM. SUPPLIER OF IGU MUST BE LISTED IN THE "IGC DIRECTORY."

4. MARKING & ETCHING

- SEE SHEET 2

REVISIONS					
REV.	ECO	DATE	REVISED	CHECKED	APPROVED
C	3346	6/11/2021	STEVENS		
D	3372-1	9/15/2021	STEVENS		
E	3380-1	10/22/2021	STEVENS		

  
Total Quality. Assured.

Report #:



P8519.01-801-44

Date:

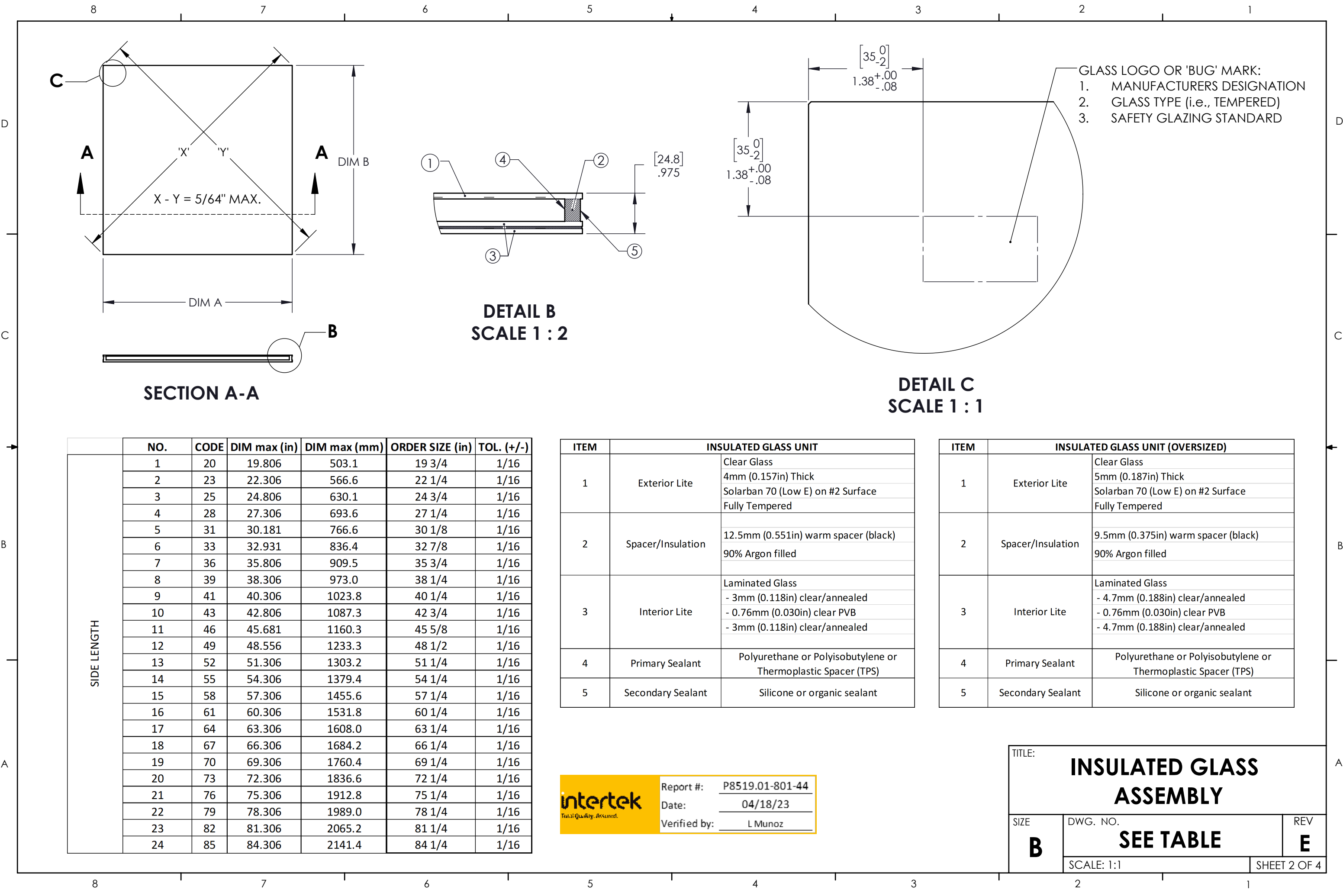
04/18/23

Verified by:

L Munoz

UNLESS OTHERWISE SPECIFIED:		PROPRIETARY AND CONFIDENTIAL		<div> <b>SOLATUBE®</b> 2210 OAK RIDGE WAY VISTA, CALIFORNIA 92081-8341 PH (760) 597-4400</div>			
TOLERANCES ANGULAR: $\pm 0.5^{\circ}$ INCH .X $\pm .06$ .XX $\pm .01$ .XXX $\pm .005$ MILLIMETER [.X] $\pm 1.5$ [.XX] $\pm .25$ [.XXX] $\pm .125$		THE INFORMATION CONTAINED IN THIS DRAWING IS THE SOLE PROPERTY OF SOLATUBE. ANY REPRODUCTION IN PART OR AS A WHOLE WITHOUT THE WRITTEN PERMISSION OF SOLATUBE IS PROHIBITED.		TITLE:  <b>INSULATED GLASS ASSEMBLY</b>			
MATERIAL SEE NOTE 2		DRAWN BY STEVENS	DATE 9/17/19	SIZE  <b>B</b>	PROJECTION  (3rd)	DWG. NO.  <b>SEE TABLE</b>	REV  <b>E</b>
FINISH -- --		CHECKED BY --	DATE --		UNIT MM[INCH]	SCALE: 1:8	SHEET 1 OF 4
DO NOT SCALE DRAWING		INTERPRET DRAWINGS IAW: ASME Y14.5 - 1994					





	NO.	CODE	DIM max (in)	DIM max (mm)	ORDER SIZE (in)	TOL. (+/-)
SIDE LENGTH	1	20	19.806	503.1	19 3/4	1/16
	2	23	22.306	566.6	22 1/4	1/16
	3	25	24.806	630.1	24 3/4	1/16
	4	28	27.306	693.6	27 1/4	1/16
	5	31	30.181	766.6	30 1/8	1/16
	6	33	32.931	836.4	32 7/8	1/16
	7	36	35.806	909.5	35 3/4	1/16
	8	39	38.306	973.0	38 1/4	1/16
	9	41	40.306	1023.8	40 1/4	1/16
	10	43	42.806	1087.3	42 3/4	1/16
	11	46	45.681	1160.3	45 5/8	1/16
	12	49	48.556	1233.3	48 1/2	1/16
	13	52	51.306	1303.2	51 1/4	1/16
	14	55	54.306	1379.4	54 1/4	1/16
	15	58	57.306	1455.6	57 1/4	1/16
	16	61	60.306	1531.8	60 1/4	1/16
	17	64	63.306	1608.0	63 1/4	1/16
	18	67	66.306	1684.2	66 1/4	1/16
	19	70	69.306	1760.4	69 1/4	1/16
	20	73	72.306	1836.6	72 1/4	1/16
	21	76	75.306	1912.8	75 1/4	1/16
	22	79	78.306	1989.0	78 1/4	1/16
	23	82	81.306	2065.2	81 1/4	1/16
	24	85	84.306	2141.4	84 1/4	1/16

ITEM	INSULATED GLASS UNIT	
1	Exterior Lite	Clear Glass 4mm (0.157in) Thick Solarban 70 (Low E) on #2 Surface Fully Tempered
2	Spacer/Insulation	12.5mm (0.551in) warm spacer (black) 90% Argon filled
3	Interior Lite	Laminated Glass - 3mm (0.118in) clear/annealed - 0.76mm (0.030in) clear PVB - 3mm (0.118in) clear/annealed
4	Primary Sealant	Polyurethane or Polyisobutylene or Thermoplastic Spacer (TPS)
5	Secondary Sealant	Silicone or organic sealant

ITEM	INSULATED GLASS UNIT (OVERSIZED)	
1	Exterior Lite	Clear Glass 5mm (0.187in) Thick Solarban 70 (Low E) on #2 Surface Fully Tempered
2	Spacer/Insulation	9.5mm (0.375in) warm spacer (black) 90% Argon filled
3	Interior Lite	Laminated Glass - 4.7mm (0.188in) clear/annealed - 0.76mm (0.030in) clear PVB - 4.7mm (0.188in) clear/annealed
4	Primary Sealant	Polyurethane or Polyisobutylene or Thermoplastic Spacer (TPS)
5	Secondary Sealant	Silicone or organic sealant



Report #:

P8519.01-801-44

Date:

04/18/23

Verified by:

L Munoz

TITLE:

INSULATED GLASS ASSEMBLY

SIZE

B

DWG. NO.

SEE TABLE

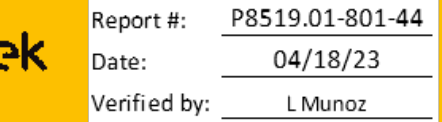
REV

E

SCALE: 1:1

SHEET 2 OF 4

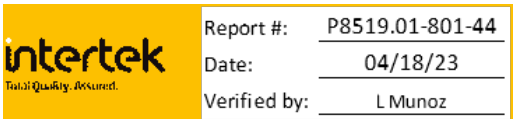
INSULATED GLASS ASSEMBLIES									
	CODE	PN	DESCRIPTION			CODE	PN	DESCRIPTION	
1	2020	381515	INSULATED GLASS ASSY 19 3/4" X 19 3/4"		47	3131	383031	INSULATED GLASS ASSY 30 1/8" X 30 1/8"	
2	2023	381521	INSULATED GLASS ASSY 19 3/4" X 22 1/4"		48	3133	382067	INSULATED GLASS ASSY 30 1/8" X 32 7/8"	
3	2025	381536	INSULATED GLASS ASSY 19 3/4" X 24 3/4"		49	3136	382068	INSULATED GLASS ASSY 30 1/8" X 35 3/4"	
4	2028	381520	INSULATED GLASS ASSY 19 3/4" X 27 1/4"		50	3139	383041	INSULATED GLASS ASSY 30 1/8" X 38 1/4"	
5	2031	382026	INSULATED GLASS ASSY 19 3/4" X 30 1/8"		51	3141	382072	INSULATED GLASS ASSY 30 1/8" X 40 1/4"	
6	2033	382027	INSULATED GLASS ASSY 19 3/4" X 32 7/8"		52	3143	382073	INSULATED GLASS ASSY 30 1/8" X 42 3/4"	
7	2036	382031	INSULATED GLASS ASSY 19 3/4" X 35 3/4"		53	3146	382074	INSULATED GLASS ASSY 30 1/8" X 45 5/8"	
8	2039	382045	INSULATED GLASS ASSY 19 3/4" X 38 1/4"		54	3149	382077	INSULATED GLASS ASSY 30 1/8" X 48 1/2"	
9	2041	382046	INSULATED GLASS ASSY 19 3/4" X 40 1/4"		55	3152	382078	INSULATED GLASS ASSY 30 1/8" X 51 1/4"	
10	2043	382036	INSULATED GLASS ASSY 19 3/4" X 42 3/4"		56	3333	382069	INSULATED GLASS ASSY 32 7/8" X 32 7/8"	
11	2046	381541	INSULATED GLASS ASSY 19 3/4" X 45 5/8"		57	3336	382071	INSULATED GLASS ASSY 32 7/8" X 35 3/4"	
12	2049	381544	INSULATED GLASS ASSY 19 3/4" X 48 1/2"		58	3339	382079	INSULATED GLASS ASSY 32 7/8" X 38 1/4"	
13	2052	381540	INSULATED GLASS ASSY 19 3/4" X 51 1/4"		59	3341	382081	INSULATED GLASS ASSY 32 7/8" X 40 1/4"	
14	2323	382021	INSULATED GLASS ASSY 22 1/4" X 22 1/4"		60	3343	382082	INSULATED GLASS ASSY 32 7/8" X 42 3/4"	
15	2325	382022	INSULATED GLASS ASSY 22 1/4" X 24 3/4"		61	3346	382083	INSULATED GLASS ASSY 32 7/8" X 45 5/8"	
16	2328	382023	INSULATED GLASS ASSY 22 1/4" X 27 1/4"		62	3349	382084	INSULATED GLASS ASSY 32 7/8" X 48 1/2"	
17	2331	382032	INSULATED GLASS ASSY 22 1/4" X 30 1/8"		63	3352	382086	INSULATED GLASS ASSY 32 7/8" X 51 1/4"	
18	2333	382034	INSULATED GLASS ASSY 22 1/4" X 32 7/8"		64	3636	383030	INSULATED GLASS ASSY 35 3/4" X 35 3/4"	
19	2336	382037	INSULATED GLASS ASSY 22 1/4" X 35 3/4"		65	3639	382087	INSULATED GLASS ASSY 35 3/4" X 38 1/4"	
20	2339	382047	INSULATED GLASS ASSY 22 1/4" X 38 1/4"		66	3641	382088	INSULATED GLASS ASSY 35 3/4" X 40 1/4"	
21	2341	382049	INSULATED GLASS ASSY 22 1/4" X 40 1/4"		67	3643	382089	INSULATED GLASS ASSY 35 3/4" X 42 3/4"	
22	2343	382051	INSULATED GLASS ASSY 22 1/4" X 42 3/4"		68	3646	382091	INSULATED GLASS ASSY 35 3/4" X 45 5/8"	
23	2346	382041	INSULATED GLASS ASSY 22 1/4" X 45 5/8"		69	3649	382092	INSULATED GLASS ASSY 35 3/4" X 48 1/2"	
24	2349	382058	INSULATED GLASS ASSY 22 1/4" X 48 1/2"		70	3652	383040	INSULATED GLASS ASSY 35 3/4" X 51 1/4"	
25	2352	382059	INSULATED GLASS ASSY 22 1/4" X 51 1/4"		71	3939	383536	INSULATED GLASS ASSY 38 1/4" X 38 1/4"	
26	2525	382024	INSULATED GLASS ASSY 24 3/4" X 24 3/4"		72	3941	382093	INSULATED GLASS ASSY 38 1/4" X 40 1/4"	
27	2528	382025	INSULATED GLASS ASSY 24 3/4" X 27 1/4"		73	3943	382094	INSULATED GLASS ASSY 38 1/4" X 42 3/4"	
28	2531	382038	INSULATED GLASS ASSY 24 3/4" X 30 1/8"		74	3946	383541	INSULATED GLASS ASSY 38 1/4" X 45 5/8"	
29	2533	382039	INSULATED GLASS ASSY 24 3/4" X 32 7/8"		75	3949	382098	INSULATED GLASS ASSY 38 1/4" X 48 1/2"	
30	2536	382042	INSULATED GLASS ASSY 24 3/4" X 35 3/4"		76	3952	382099	INSULATED GLASS ASSY 38 1/4" X 51 1/4"	
31	2539	382052	INSULATED GLASS ASSY 24 3/4" X 38 1/4"		77	4141	382096	INSULATED GLASS ASSY 40 1/4" X 40 1/4"	
32	2541	382053	INSULATED GLASS ASSY 24 3/4" X 40 1/4"		78	4143	382097	INSULATED GLASS ASSY 40 1/4" X 42 3/4"	
33	2543	382054	INSULATED GLASS ASSY 24 3/4" X 42 3/4"		79	4146	382101	INSULATED GLASS ASSY 40 1/4" X 45 5/8"	



TITLE:			<h1>INSULATED GLASS ASSEMBLY</h1>		
SIZE  <b>B</b>	DWG. NO.  <b>SEE TABLE</b>			REV  <b>E</b>	
	SCALE: 1:1			SHEET 3 OF 4	



INSULATED GLASS ASSEMBLIES (OVERSIZED)							
	CODE	PN	DESCRIPTION		CODE	PN	DESCRIPTION
92	2055	382112	INSULATED GLASS ASSY 19 3/4" X 54 1/4"	163	3670	382184	INSULATED GLASS ASSY 35 3/4" X 69 1/4"
93	2058	382113	INSULATED GLASS ASSY 19 3/4" X 57 1/4"	164	3673	382185	INSULATED GLASS ASSY 35 3/4" X 72 1/4"
94	2061	382114	INSULATED GLASS ASSY 19 3/4" X 60 1/4"	165	3676	382186	INSULATED GLASS ASSY 35 3/4" X 75 1/4"
95	2064	382115	INSULATED GLASS ASSY 19 3/4" X 63 1/4"	166	3679	382187	INSULATED GLASS ASSY 35 3/4" X 78 1/4"
96	2067	382116	INSULATED GLASS ASSY 19 3/4" X 66 1/4"	167	3682	382188	INSULATED GLASS ASSY 35 3/4" X 81 1/4"
97	2070	382117	INSULATED GLASS ASSY 19 3/4" X 69 1/4"	168	3685	382189	INSULATED GLASS ASSY 35 3/4" X 84 1/4"
98	2073	382118	INSULATED GLASS ASSY 19 3/4" X 72 1/4"	169	3955	382190	INSULATED GLASS ASSY 38 1/4" X 54 1/4"
99	2076	382119	INSULATED GLASS ASSY 19 3/4" X 75 1/4"	170	3958	382191	INSULATED GLASS ASSY 38 1/4" X 57 1/4"
100	2079	382121	INSULATED GLASS ASSY 19 3/4" X 78 1/4"	171	3961	382192	INSULATED GLASS ASSY 38 1/4" X 60 1/4"
101	2082	382122	INSULATED GLASS ASSY 19 3/4" X 81 1/4"	172	3964	382193	INSULATED GLASS ASSY 38 1/4" X 63 1/4"
102	2085	382123	INSULATED GLASS ASSY 19 3/4" X 84 1/4"	173	3967	382194	INSULATED GLASS ASSY 38 1/4" X 66 1/4"
103	2355	382124	INSULATED GLASS ASSY 22 1/4" X 54 1/4"	174	3970	382195	INSULATED GLASS ASSY 38 1/4" X 69 1/4"
104	2358	382125	INSULATED GLASS ASSY 22 1/4" X 57 1/4"	175	3973	382196	INSULATED GLASS ASSY 38 1/4" X 72 1/4"
105	2361	382126	INSULATED GLASS ASSY 22 1/4" X 60 1/4"	176	3976	382197	INSULATED GLASS ASSY 38 1/4" X 75 1/4"
106	2364	382127	INSULATED GLASS ASSY 22 1/4" X 63 1/4"	177	3979	382198	INSULATED GLASS ASSY 38 1/4" X 78 1/4"
107	2367	382128	INSULATED GLASS ASSY 22 1/4" X 66 1/4"	178	3982	382199	INSULATED GLASS ASSY 38 1/4" X 81 1/4"
108	2370	382129	INSULATED GLASS ASSY 22 1/4" X 69 1/4"	179	3985	382200	INSULATED GLASS ASSY 38 1/4" X 84 1/4"
109	2373	382130	INSULATED GLASS ASSY 22 1/4" X 72 1/4"	180	4155	382201	INSULATED GLASS ASSY 40 1/4" X 54 1/4"
110	2376	382131	INSULATED GLASS ASSY 22 1/4" X 75 1/4"	181	4158	382202	INSULATED GLASS ASSY 40 1/4" X 57 1/4"
111	2379	382132	INSULATED GLASS ASSY 22 1/4" X 78 1/4"	182	4161	382203	INSULATED GLASS ASSY 40 1/4" X 60 1/4"
112	2382	382133	INSULATED GLASS ASSY 22 1/4" X 81 1/4"	183	4164	382204	INSULATED GLASS ASSY 40 1/4" X 63 1/4"
113	2385	382134	INSULATED GLASS ASSY 22 1/4" X 84 1/4"	184	4167	382205	INSULATED GLASS ASSY 40 1/4" X 66 1/4"
114	2555	382135	INSULATED GLASS ASSY 24 3/4" X 54 1/4"	185	4170	382206	INSULATED GLASS ASSY 40 1/4" X 69 1/4"
115	2558	382136	INSULATED GLASS ASSY 24 3/4" X 57 1/4"	186	4173	382207	INSULATED GLASS ASSY 40 1/4" X 72 1/4"
116	2561	382137	INSULATED GLASS ASSY 24 3/4" X 60 1/4"	187	4176	382208	INSULATED GLASS ASSY 40 1/4" X 75 1/4"
117	2564	382138	INSULATED GLASS ASSY 24 3/4" X 63 1/4"	188	4179	382209	INSULATED GLASS ASSY 40 1/4" X 78 1/4"
118	2567	382139	INSULATED GLASS ASSY 24 3/4" X 66 1/4"	189	4182	382210	INSULATED GLASS ASSY 40 1/4" X 81 1/4"
119	2570	382140	INSULATED GLASS ASSY 24 3/4" X 69 1/4"	190	4185	382211	INSULATED GLASS ASSY 40 1/4" X 84 1/4"
120	2573	382141	INSULATED GLASS ASSY 24 3/4" X 72 1/4"	191	4355	382212	INSULATED GLASS ASSY 42 3/4" X 54 1/4"
121	2576	382142	INSULATED GLASS ASSY 24 3/4" X 75 1/4"	192	4358	382213	INSULATED GLASS ASSY 42 3/4" X 57 1/4"
122	2579	382143	INSULATED GLASS ASSY 24 3/4" X 78 1/4"	193	4361	382214	INSULATED GLASS ASSY 42 3/4" X 60 1/4"
123	2582	382144	INSULATED GLASS ASSY 24 3/4" X 81 1/4"	194	4364	382215	INSULATED GLASS ASSY 42 3/4" X 63 1/4"
124	2585	382145	INSULATED GLASS ASSY 24 3/4" X 84 1/4"	195	4367	382216	INSULATED GLASS ASSY 42 3/4" X 66 1/4"
125	2855	382146	INSULATED GLASS ASSY 27 1/4" X 54 1/4"	196	4370	382217	INSULATED GLASS ASSY 42 3/4" X 69 1/4"
126	2858	382147	INSULATED GLASS ASSY 27 1/4" X 57 1/4"	197	4373	382218	INSULATED GLASS ASSY 42 3/4" X 72 1/4"
127	2861	382148	INSULATED GLASS ASSY 27 1/4" X 60 1/4"	198	4376	382219	INSULATED GLASS ASSY 42 3/4" X 75 1/4"
128	2864	382149	INSULATED GLASS ASSY 27 1/4" X 63 1/4"	199	4379	382220	INSULATED GLASS ASSY 42 3/4" X 78 1/4"
129	2867	382150	INSULATED GLASS ASSY 27 1/4" X 66 1/4"	200	4382	382221	INSULATED GLASS ASSY 42 3/4" X 81 1/4"
130	2870	382151	INSULATED GLASS ASSY 27 1/4" X 69 1/4"	201	4385	382222	INSULATED GLASS ASSY 42 3/4" X 84 1/4"
131	2873	382152	INSULATED GLASS ASSY 27 1/4" X 72 1/4"	202	4655	382223	INSULATED GLASS ASSY 45 5/8" X 54 1/4"
132	2876	382153	INSULATED GLASS ASSY 27 1/4" X 75 1/4"	203	4658	382224	INSULATED GLASS ASSY 45 5/8" X 57 1/4"
133	2879	382154	INSULATED GLASS ASSY 27 1/4" X 78 1/4"	204	4661	382225	INSULATED GLASS ASSY 45 5/8" X 60 1/4"
134	2882	382155	INSULATED GLASS ASSY 27 1/4" X 81 1/4"	205	4664	382226	INSULATED GLASS ASSY 45 5/8" X 63 1/4"
135	2885	382156	INSULATED GLASS ASSY 27 1/4" X 84 1/4"	206	4667	382227	INSULATED GLASS ASSY 45 5/8" X 66 1/4"
136	3155	382157	INSULATED GLASS ASSY 30 1/8" X 54 1/4"	207	4670	382228	INSULATED GLASS ASSY 45 5/8" X 69 1/4"
137	3158	382158	INSULATED GLASS ASSY 30 1/8" X 57 1/4"	208	4673	382229	INSULATED GLASS ASSY 45 5/8" X 72 1/4"
138	3161	382159	INSULATED GLASS ASSY 30 1/8" X 60 1/4"	209	4676	382230	INSULATED GLASS ASSY 45 5/8" X 75 1/4"
139	3164	382160	INSULATED GLASS ASSY 30 1/8" X 63 1/4"	210	4679	382231	INSULATED GLASS ASSY 45 5/8" X 78 1/4"
140	3167	382161	INSULATED GLASS ASSY 30 1/8" X 66 1/4"	211	4682	382232	INSULATED GLASS ASSY 45 5/8" X 81 1/4"
141	3170	382162	INSULATED GLASS ASSY 30 1/8" X 69 1/4"	212	4685	382233	INSULATED GLASS ASSY 45 5/8" X 84 1/4"
142	3173	382163	INSULATED GLASS ASSY 30 1/8" X 72 1/4"	213	4955	382234	INSULATED GLASS ASSY 48 1/2" X 54 1/4"
143	3176	382164	INSULATED GLASS ASSY 30 1/8" X 75 1/4"	214	4958	382235	INSULATED GLASS ASSY 48 1/2" X 57 1/4"
144	3179	382165	INSULATED GLASS ASSY 30 1/8" X 78 1/4"	215	4961	382236	INSULATED GLASS ASSY 48 1/2" X 60 1/4"
145	3182	382166	INSULATED GLASS ASSY 30 1/8" X 81 1/4"	216	4964	382237	INSULATED GLASS ASSY 48 1/2" X 63 1/4"
146	3185	382167	INSULATED GLASS ASSY 30 1/8" X 84 1/4"	217	4967	382238	INSULATED GLASS ASSY 48 1/2" X 66 1/4"
147	3355	382168	INSULATED GLASS ASSY 32 7/8" X 54 1/4"	218	4970	382239	INSULATED GLASS ASSY 48 1/2" X 69 1/4"
148	3358	382169	INSULATED GLASS ASSY 32 7/8" X 57 1/4"	219	4973	382241	INSULATED GLASS ASSY 48 1/2" X 72 1/4"
149	3361	382170	INSULATED GLASS ASSY 32 7/8" X 60 1/4"	220	4976	382242	INSULATED GLASS ASSY 48 1/2" X 75 1/4"
150	3364	382171	INSULATED GLASS ASSY 32 7/8" X 63 1/4"	221	4979	382243	INSULATED GLASS ASSY 48 1/2" X 78 1/4"
151	3367	382172	INSULATED GLASS ASSY 32 7/8" X 66 1/4"	222	4982	382244	INSULATED GLASS ASSY 48 1/2" X 81 1/4"
152	3370	382173	INSULATED GLASS ASSY 32 7/8" X 69 1/4"	223	4985	382245	INSULATED GLASS ASSY 48 1/2" X 84 1/4"
153	3373	382174	INSULATED GLASS ASSY 32 7/8" X 72 1/4"	224	5255	382246	INSULATED GLASS ASSY 51 1/4" X 54 1/4"
154	3376	382175	INSULATED GLASS ASSY 32 7/8" X 75 1/4"	225	5258	382247	INSULATED GLASS ASSY 51 1/4" X 57 1/4"
155	3379	382176	INSULATED GLASS ASSY 32 7/8" X 78 1/4"	226	5261	382248	INSULATED GLASS ASSY 51 1/4" X 60 1/4"
156	3382	382177	INSULATED GLASS ASSY 32 7/8" X 81 1/4"	227	5555	382249	INSULATED GLASS ASSY 54 1/4" X 54 1/4"
157	3385	382178	INSULATED GLASS ASSY 32 7/8" X 84 1/4"	228	5558	382250	INSULATED GLASS ASSY 54 1/4" X 57 1/4"
158	3655	382179	INSULATED GLASS ASSY 35 3/4" X 54 1/4"	229	5561	382251	INSULATED GLASS ASSY 54 1/4" X 60 1/4"
159	3658	382180	INSULATED GLASS ASSY 35 3/4" X 57 1/4"	230	5858	382252	INSULATED GLASS ASSY 57 1/4" X 57 1/4"
160	3661	382181	INSULATED GLASS ASSY 35 3/4" X 60 1/4"	231	5861	382253	INSULATED GLASS ASSY 57 1/4" X 60 1/4"
161	3664	382182	INSULATED GLASS ASSY 35 3/4" X 63 1/4"	232	6161	382254	INSULATED GLASS ASSY 60 1/4" X 60 1/4"
162	3667	382183	INSULATED GLASS ASSY 35 3/4" X 66 1/4"				



TITLE:			<h1 style="text-align: center;">INSULATED GLASS ASSEMBLY</h1>		
SIZE  <b>B</b>	DWG. NO.  <b>SEE TABLE</b>			REV  <b>E</b>	
	SCALE: 1:1			SHEET 4 OF 4	



Total Quality. Assured.

1909 10th Street, Suite 100  
Plano, Texas 75074

Telephone: 469-814-0687  
[www.intertek.com/building](http://www.intertek.com/building)

## TEST REPORT FOR SOLATUBE INTERNATIONAL, INC.

Report No.: P8519.01-801-44 R0

Date: 04/20/23

### SECTION 12

#### REVISION LOG

REVISION #	DATE	PAGES	REVISION
0	04/20/23	N/A	Original Report Issue