

# SOLAR POWERED ATTIC FAN RM 1500 ADD-ON PANEL



# SOLATUBE®

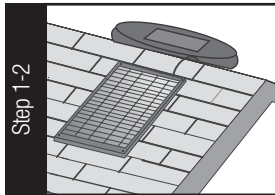
## Solar Powered Attic Fans

### ADD-ON PANEL INSTALLATION INSTRUCTIONS

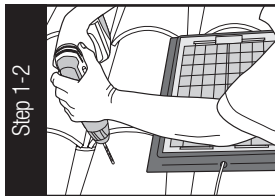
Note: This product is not for use with the RM 2400 Solar Powered Attic Fan

#### COMPOSITE ROOF

**Step 1:** Mount solar panel to roof within a 12' (3.5m) area from either the RM 1500 or IM 1500. Shaded areas are not recommended. Feed 15' extension cable through one of the two cable access holes. NOTE: Solar Star label on solar panel should be oriented towards the peak of the roof.



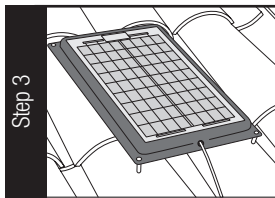
**Step 2:** Using the four (4), 2" (51mm) screws provided, secure the solar panel to roof through the four pre-drilled holes in mounting plate. Coat screws with sealant (not provided). Route 15' (4.5m) power cable to either the RM 1500 or IM 1500.



#### TILE ROOF

**Step 1:** Align and mark the four corners of the solar panel with the peaks of the curved tile.

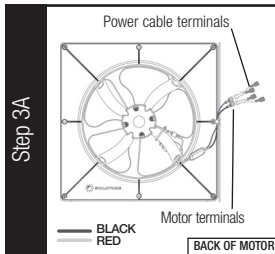
**Step 2:** Drill four (4) holes in the tile using a 1/4" masonry bit and insert the four anchors.



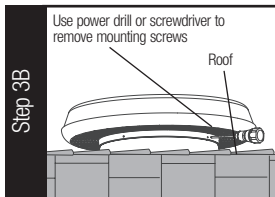
**Step 3:** Secure the solar panel to the tile roof using the four (4) 2" screws provided. Insert two (2) 1" standoffs on the dow. Re-connect the panel to the Y-Connector. Connect the new Add-on Panel to the Y-Connector. NOTE: RED wires connect to RED terminals only, and BLACK wires connect only to BLACK terminals. For final connection, see diagram for Step 3E.

#### Connecting Terminals to Roof Mounted Attic Fan

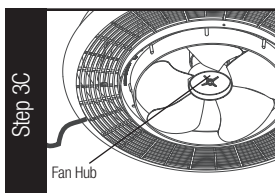
**Step 3B-3C:** Cover built-in solar panel on roof mount vent with an opaque material or blanket in order to cease unit's operation. Using a power drill or Phillips head screwdriver, remove the four (4) mounting screws (three (3) with pitched flashing). Pull Roof Mount Vent from flashing. Remove nut on fan blade with 10mm wrench. Pull straight up on fan hub until fan blade is free from motor shaft. Feed extension cable from Add-on Solar Panel through the grill of the Roof Mount Vent.



**Step 3D-3E:** Disconnect one lead wire from motor terminal at a time. Add a Y-Connector to the BLACK and RED motor leads. Re-connect the panel to the Y-Connector. Connect the new Add-On Panel to the Y-Connector. NOTE: RED wires connect to RED terminals only, and BLACK wires connect only to BLACK terminals.



**Step 4:** Secure loose wires away from fan blade with zip ties (provided) so as not to interfere with fan blade operation. Align notch in fan hub with motor shaft and replace fan blade. Reinstall nut using 10mm wrench to secure fan blade. Re-insert mounting screws and secure Roof Mount Vent to flashing.



PARTS LIST		
	Quantity	Required Tools
1. Solar Panel	(1)	1. Phillips Screwdriver
2. Panel Hardware Kit	(1)	2. Power Drill
a. #10 x 2" (51 mm) screws	(4)	3. Ladder
b. #10 x 1.3" (33 mm) anchors	(4)	4. Roof Sealant
c. 1" standoff	(2)	5. Masonry Bit
d. Y-Connector	(2)	6. 10mm Wrench
e. Zip Tie	(2)	



**WARNING: DO NOT PROCEED WITH THE INSTALLATION UNTIL YOU HAVE READ THE ENTIRE INSTRUCTIONS INCLUDING THESE WARNINGS.**



#### PRECAUTIONS

##### Install at your own risk!

- Installation requires climbing and working at dangerous heights, including on ladders, scaffolding, roofs and in attic spaces. Risk of death, personal injury and property damage may result from a fall, or from falling objects. Use extreme caution to minimize risk of accidental injury, including, but not limited to the following procedures:
- Avoid working on surfaces that are slippery or wet.
- Use foot-wear with excellent traction.
- Use only strong, well supported ladders.
- Work only in calm dry weather.
- When in an attic, ensure that your weight is supported at all times with structurally sound framing; dry wall material is not designed to carry a person's weight.
- To reduce the risk of fire, electric shock, and personal injury; basic safety precautions should always be followed when using electric tools, including always wearing safety goggles or other suitable eye protection, and ensuring work area is clear of all electrical wires, gas pipes, water pipes, and other obstacles.
- When working in an attic, use of a mask or respirator is recommended to avoid lung irritation. Attic spaces may be dark, confined, and subject to extreme temperatures. Beware of sharp protruding objects. Do not attempt installation without having someone within range of your voice or close enough to come to your aid if necessary.

