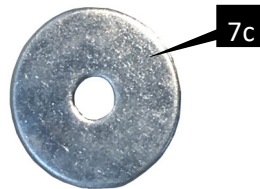
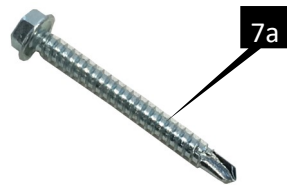
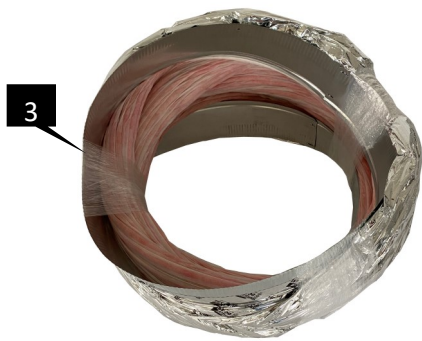




# Engineered Performance Series

## Whole House Fan EPS Ultra, EPS Extreme

### Installation Instructions



Parts List *		Quantity
1	Fan Assembly (EPS Extreme Shown)	(1)
2	Transition	(1)
3	Insulated Ducting	(1)
4	Damper Box	(1)
5	Fan Grille	(1)
6	HushMount™ 2 Assembly	(1)
Fastener Kit		
7	a. Screw #8 X 1-1/2 (38 mm) Hex Head Drill Tip	(16)
	b. Screw #8 X 5/8 in (16 mm) Hex Head Drill Tip	(22)
	c. Washer	(2)
8	Variable Speed Remote Control	(1)
9	Nylon Strapping (Sold Separately) (Not Shown)	
10	Foil Tape (Sold Separately) (Not Shown)	

#### Required Tools:

Keyhole Saw

Screw Gun with 1/4 in Nut Driver (Hex Head)

Tape Measure

Utility Knife

Screwdriver with Phillips Head

Pencil

Required Safety Equipment

For the most current Installation Instructions, please visit [www.solatube.com/instructions](http://www.solatube.com/instructions)  
 Solatube International, Inc. | 2210 Oak Ridge Way | Vista, CA 92081-8341 | [www.solatube.com](http://www.solatube.com) | T: 888.SOLATUBE

# **WARNING**



**Do not proceed with the installation until you have read the entire instructions, including these warnings. Use of materials or methods not authorized by Solatube International will result in an invalid warranty.**

Solatube International, Inc. (seller) assumes no responsibility or obligation whatsoever for the failure of an architect, contractor, installer, or building owner to comply with all applicable laws, ordinances, building codes, electrical codes, energy codes, fire and safety codes and requirements, roof warranties and adequate safety precautions. Installation of this product should be attempted only by individuals skilled in the use of the tools and equipment necessary for installation. Protect yourself and all persons and property during installation. If you have any doubt concerning your competence or expertise, consult a qualified expert before proceeding. **Deviation from these instructions in any manner, including application and mounting, will result in a voided warranty.**

## **Install at your own risk!**



Solatube product installations may be dangerous and include the potential for death, personal injury and property damage. The hazardous conditions include but are not limited to the following:

- Solatube Daylighting Systems, Solar Star products, and Whole House Fan ventilation systems may have sharp edges. Always wear leather or canvas gloves while handling and installing products.
- Solatube product installations require climbing and working at dangerous heights, including on ladders, scaffolding, roofs and in attic spaces. Risk of death, personal injury and property damage may result from a fall, or from falling objects. Use extreme caution to minimize risk of accidental injury, including, but not limited to the following procedures:
  - Clear area below your work space of all people, animals and other items.
  - Avoid working on surfaces that are slippery or wet.
  - Use foot-wear with excellent traction.
  - Use only strong, well supported ladders.
  - Work only in calm dry weather.
  - When in the attic, ensure that your weight is supported at all times with structurally sound framing; drywall material is not designed to carry a person's weight.
- To reduce the risk of fire, electric shock, and personal injury, basic safety precautions should always be followed when using electric tools, including always wearing safety goggles or other suitable eye protection, and ensuring work area is clear of all electrical wires, gas pipes, water pipes, and other obstacles.
- When working in the attic or other dusty areas, use of a mask or respirator is recommended to avoid lung irritation. Attic spaces may be dark, confined, and subject to extreme temperatures. Beware of sharp protruding objects. Do not attempt installation without having someone within range of your voice or close enough to come to your aid if necessary.
- Solatube products are not designed to withstand the weight of a person, tools or other objects. Walking or placing objects on the system could cause personal injury and property damage. If the product is damaged, the structural capacity may be weakened; therefore the system should be repaired immediately. For safe installation and use, do not deviate from these installation instructions.



## **Whole House Fan Installation Tips**

These instructions are a step-by-step guide for the installation of Solatube Whole House Fan ventilation products in the following conditions.

**PLEASE READ AND SAVE THESE INSTRUCTIONS**

## **WARNING**

**To Reduce The Risk Of Fire Or Electric Shock, Do Not Use This Fan With Any Solid-State Speed Control Device. Electrical Connections Should Only be Performed By A Licensed Electrician.**

## **To Reduce The Risk Of Fire, Electric Shock, Or Injury To Persons, Observe The Following:**

- Use this unit only in the manner intended by the manufacturer. If you have questions, please contact your Solatube International representative.
- Before servicing or cleaning unit, switch power off at service panel and lock the service disconnecting means to prevent power from being switched on accidentally. When the service disconnecting means cannot be locked, securely fasten a prominent warning device, such as a tag, to the service panel.

## **Caution**

- For General Ventilation Use Only. Do Not Use To Exhaust Hazardous or Explosive Materials and Vapors.
- Installation work and electrical wiring must be done by qualified persons (s) in accordance with all applicable codes and standards, including fire rated construction.
- Sufficient air is needed for proper combustion and exhausting of gases through the flue (chimney) of fuel burning equipment to prevent back drafting. Follow the heating equipment manufacturer's guidelines and safety standards such as those published by the National Fire Protections Association (NFPA), and the American Society for Heating, Refrigeration and Air Conditioning Engineers (ASHRAE), and local code authorities.
- When cutting or drilling into wall or ceiling, do not damage electrical wiring and other hidden utilities.
- If this unit is to be installed over a tub or shower, it must be marked as appropriate for the application and be connected to a GFCI (Ground Fault Circuit Interrupter) - Protection branch circuit.

For the most current Installation Instructions, please visit [www.solatube.com/instructions](http://www.solatube.com/instructions)

## Overview

### Locate Desired Placement of the Whole House Fan

**NOTE:** The attic must be large enough to accommodate the Whole House Fan in the chosen location. There must be a minimum vertical clearance of 30" from top of ceiling joist to roof rafter. Also, the attic must have accessible power close enough to be able to plug in the fan or hard wire to existing electrical.

**NOTE:** Please ensure that there is adequate net free ventilation for the Solatube Whole House Fan. You will need one (1) square foot of net free vent area for every 750 CFM of fan capacity.



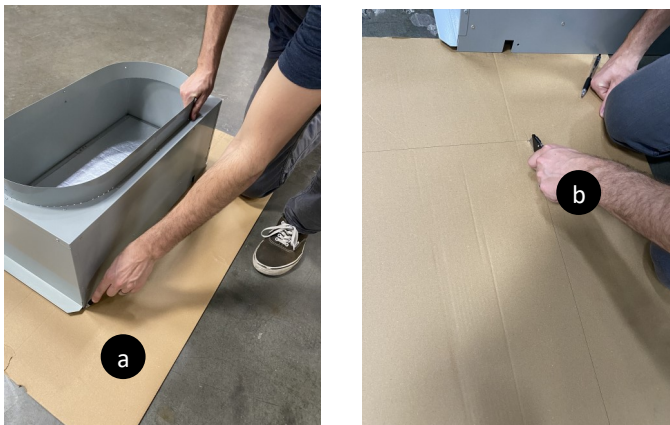
## WARNING

Avoid backdrafting of combustion appliances (i.e. gas fired water heaters and gas fired furnaces) by ensuring adequate ventilation is available and properly maintained. It is recommended to test the ventilation system to ensure intake and outlet ventilation is properly balanced. In some cases, it may be necessary to increase the number of vents to achieve this.

1

### Create a Template

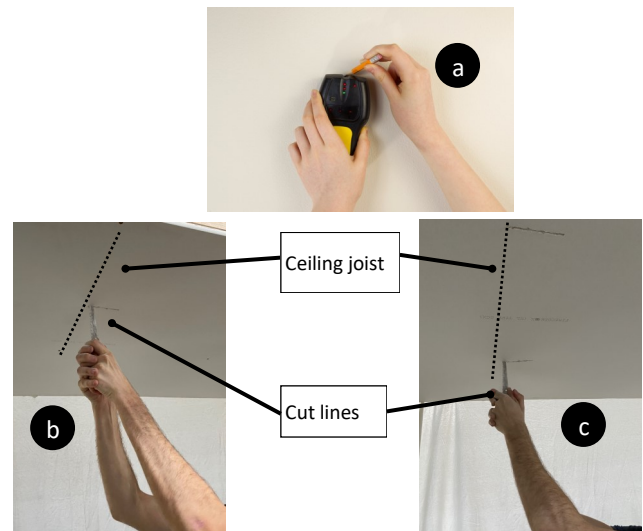
Place the Damper Box on the cardboard box and trace the outside edge onto the box. Next cut the template using a razor knife.



2

### Mark Ceiling Location for Damper Box Between Joists

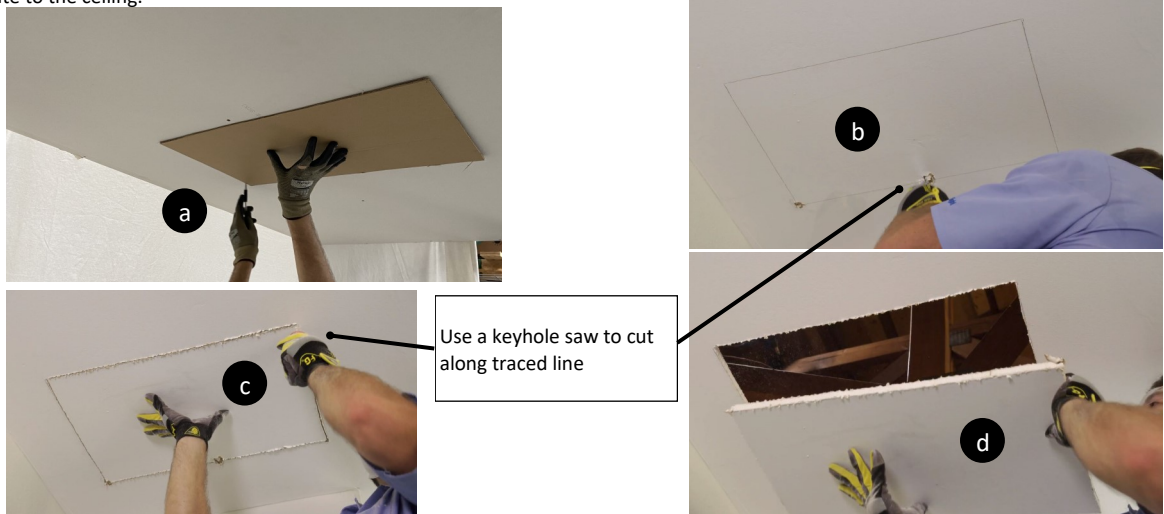
Locate ceiling joist with stud finder and mark with a pencil. Next, use a keyhole saw to make two holes in the drywall against the edge of the joist. This will work as a guide for the template used in the next step. Ensure that one of the holes is used as the corner alignment and ensure the grille will be in the desired location on the ceiling.



3

### Trace Template onto Ceiling and Cut Ceiling Hole

Align the corner edge of template with one hole and the side with the second hole to ensure the opening will be aligned with the joist. Next trace the template to the ceiling.



# 4

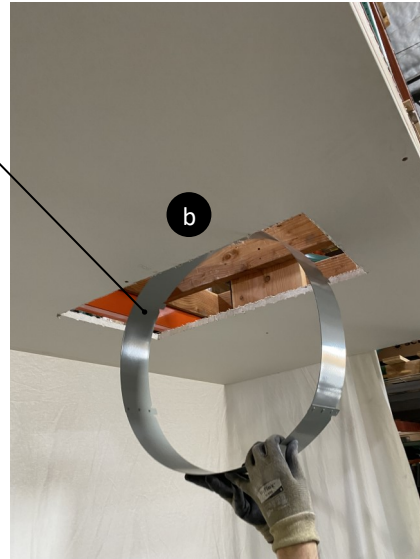
## Insert Materials into Attic

Place all remaining materials into the attic through the cut opening or existing access door.



Fan Assembly

a



Transition

b



Ducting

c



Damper box

d



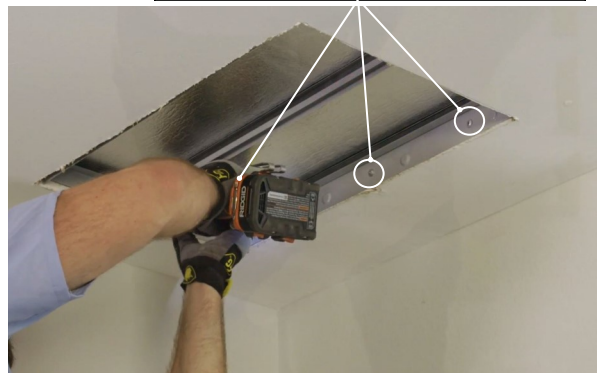
e

Insert damper box and then pull down evenly into ceiling opening. Ensure all sides of the damper box are centered on the hole and one side of the damper box is snug against the joist

# 5

## Fasten Damper Box to Joist

Secure the Damper Box to the joist using three evenly spaced 1-1/2 in Hex Head Drill Tip screws



# 6

## Insert Grille Frame

Slide Grille Frame into Damper Box



7

**Fasten Grille Frame to Damper**

Press Grille Frame against the ceiling. While firmly grasping the Damper Box and Grille Frame together, fasten to Damper box using two (2) 5/8 in Hex Head Drill Tip screws on each side of Grille Frame (four (4) total)



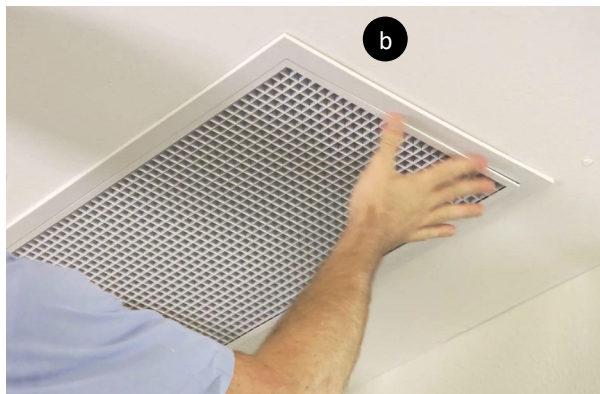
**!** Ensure Damper Box and frame are pulled tightly together to prevent vibration.



8

**Install Intake Grate**

Slide Intake Grate into frame and snap into place.

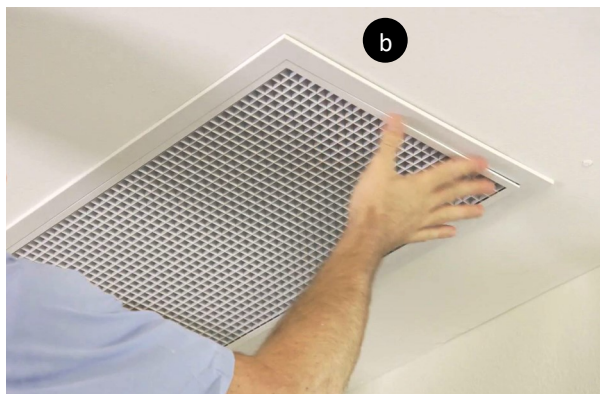


The remaining steps are performed in the attic.

**Remove Intake Grate for Cleaning**

**Remove Intake Grate**

The intake grate can be easily removed for cleaning by pulling down. The intake grate can be rinsed and cleaned in the sink or be placed in the dishwasher.



9

Fasten Transition to Fan Assembly  
Use #8 x 5/8 in. hex head drill tip screw to fasten to fan assembly.

Align tabs of transition to fastening holes on fan assembly

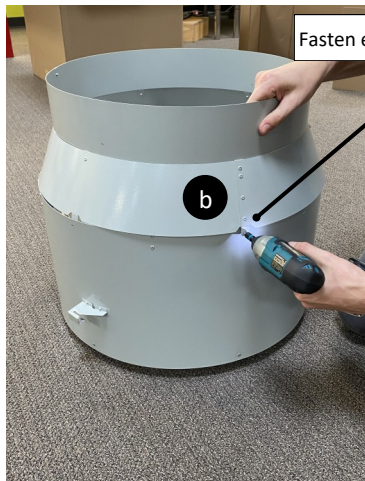


Fasten each tab to fan assembly

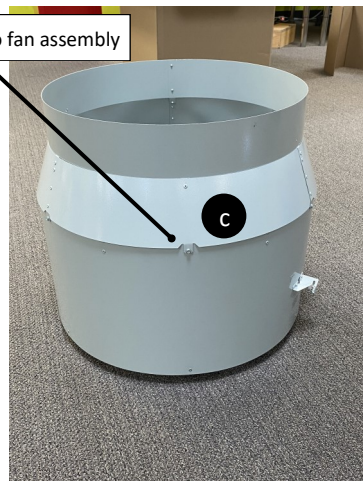


Alternate Instructions for EPS Extreme

Align tabs of transition to fastening holes on fan assembly



Fasten each tab to fan assembly



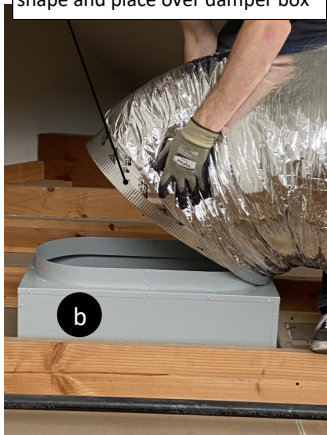
10

Attach Ducting to Damper Box

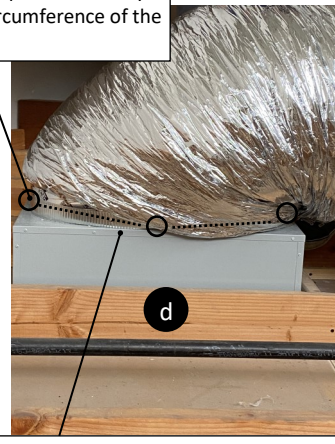
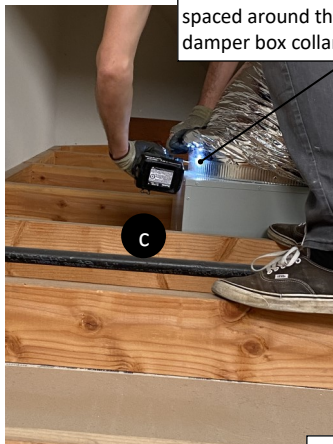


Cut plastic packaging

Squeeze ducting to make oval shape and place over damper box



Fasten ducting to damper box using four 5/8 in. hex head drill tip screws evenly spaced around the circumference of the damper box collar



For best results, apply foil tape over duct and damper box connection.

For the most current Installation Instructions, please visit [www.solatube.com/instructions](http://www.solatube.com/instructions)

6 Solatube International, Inc. | 2210 Oak Ridge Way | Vista, CA 92081-8341 | [www.solatube.com](http://www.solatube.com) | T: 888.SOLATUBE

# 11

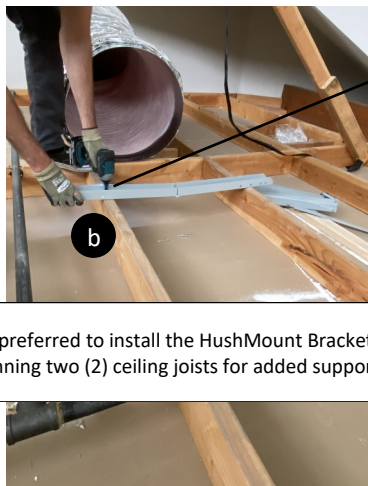
## Install HushMount Assembly

Determine the best location to install the HushMount Assembly on the attic floor.  
NOTE: Choose a location that will ensure no restrictions in the ducting.

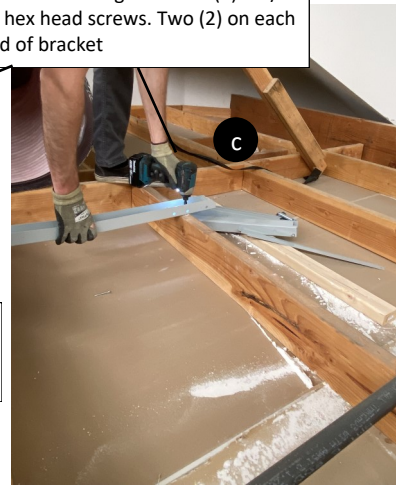
Fasten HushMount to ceiling joist or plywood flooring with four (4) 1-1/2 in. hex head screws. Two (2) on each end of bracket



Unfold HushMount Bracket and place on desired location



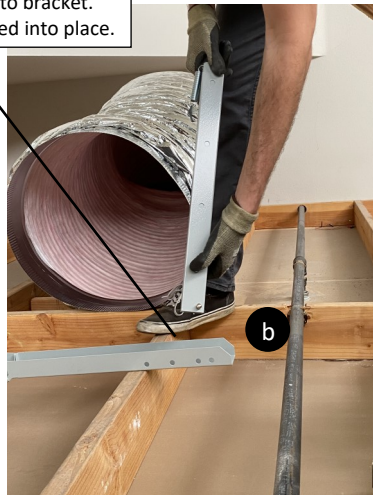
It is preferred to install the HushMount Bracket spanning two (2) ceiling joists for added support.



# 12

## Install HushMount Brackets

Insert HushMount Posts into bracket. Ensure brackets are snapped into place.



Adjust posts to appropriate height

# 13

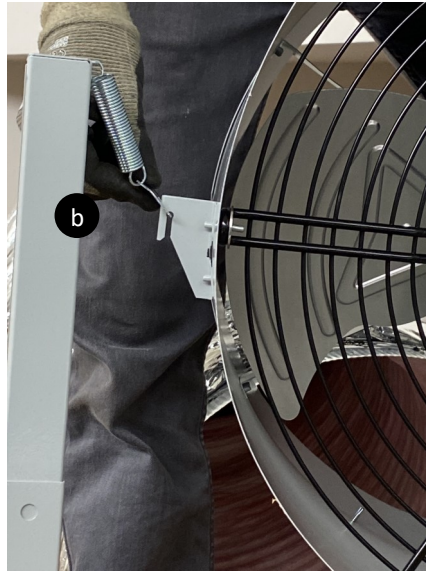
## Place Fan onto HushMount Hanging Bracket



For the most current Installation Instructions, please visit [www.solatube.com/instructions](http://www.solatube.com/instructions)  
Solatube International, Inc. | 2210 Oak Ridge Way | Vista, CA 92081-8341 | [www.solatube.com](http://www.solatube.com) | T: 888.SOLATUBE

14

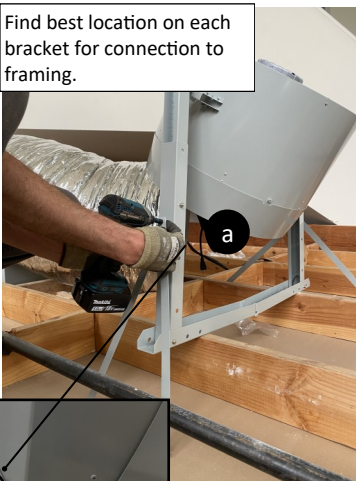
Continued - Place Fan onto HushMount Hanging Bracket



15

Install Joist Support to HushMount Bracket and Framing

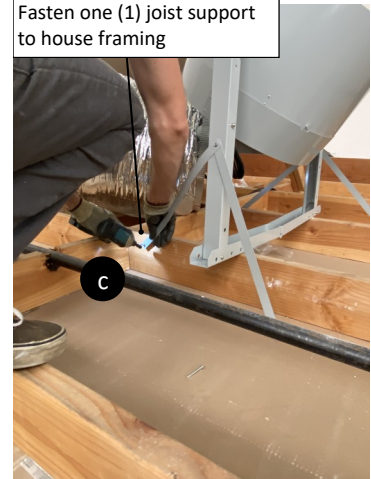
Find best location on each bracket for connection to framing.



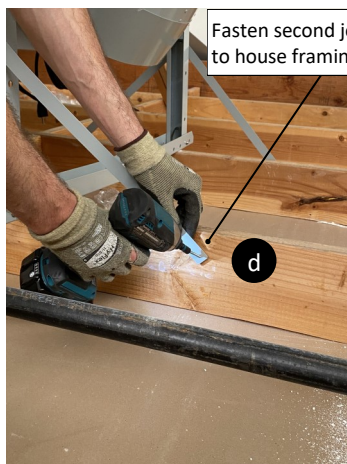
Fasten two (2) joist supports to HushMount bracket



Fasten one (1) joist support to house framing



Fasten second joist support to house framing



Install joist supports on opposite HushMount bracket.





# 16

## Fasten Ducting to Fan Assembly

Secure ducting with three (3) 5/8 in. hex head drill tip screws evenly around the circumference of the fan transition.



Pull ducting evenly over fan transition.



Fasten to transition with 5/8 in. hex head drill tip screws.

For best results, apply foil tape over duct and collar connection.



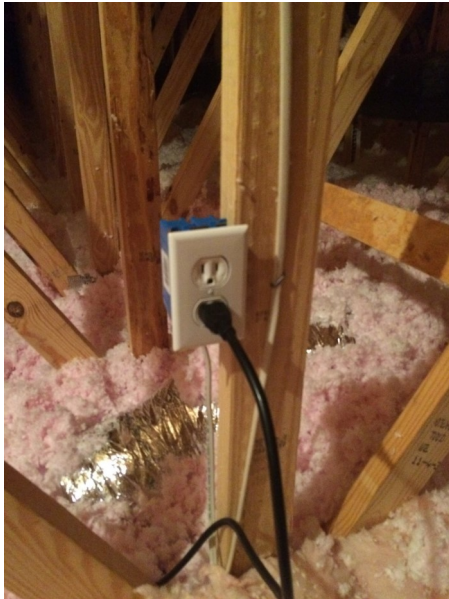
Use a custom length of strapping material to install a center strap on the ducting to keep the ducting in an optimum curve and maximizing air flow. Fasten each side of strapping with 1-1/2 in. Hex Head Drill Tip Screws and Washers.



Completed installation.

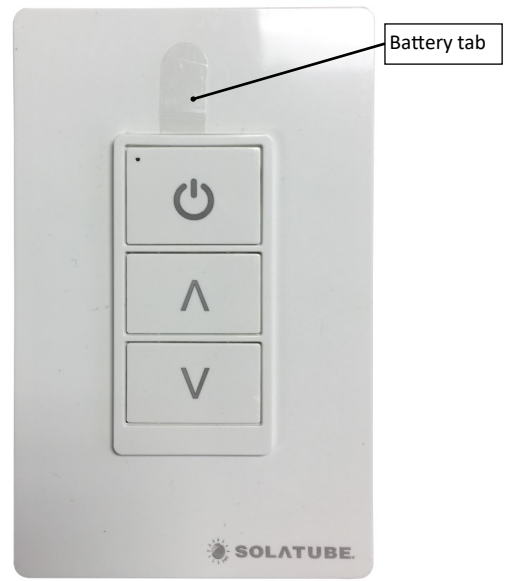
17

Plug Fan Cord into Outlet



18

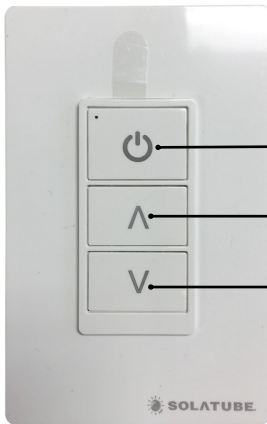
Remove Battery Tab from Remote



19

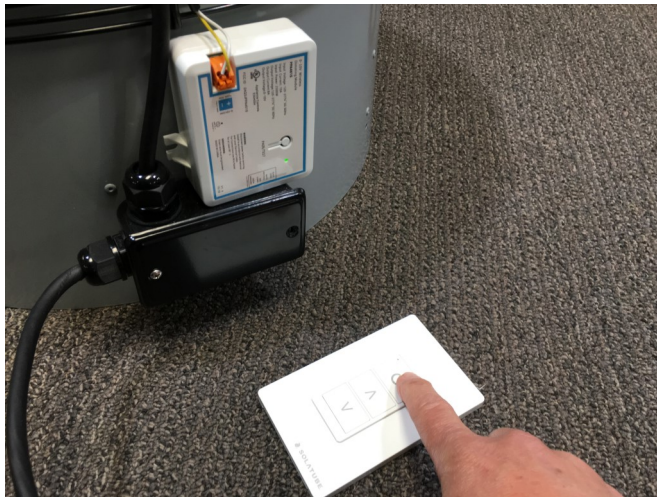
The fan will be placed into pairing mode when plug is inserted into outlet. Once fan is plugged into outlet, press and hold Power button on remote until fan control beeps. Remote is now paired with fan. Test remote by pressing Power button. Please Note: Fan will always start in highest speed.

Note: The fan motor is built with Soft Start Technology. This feature will slowly ramp up the motor to the highest speed. It may take a few seconds for the fan to start up. This is normal operation of the fan.



Power  
Increase Fan Speed  
Decrease Fan Speed

There are seven (7) speeds



20

Pairing A New Remote

1. Press and release Pair/Test button on fan motor until green light flashes.
2. Press and hold Power button on remote until fan control beeps.
3. Remote is now paired with fan.

Remove A Remote From Pairing

1. Press and hold Pair/Test button on fan motor until motor beeps rapidly 4 times.
2. Remote is now removed from motor memory.



For the most current Installation Instructions, please visit [www.solatube.com/instructions](http://www.solatube.com/instructions)

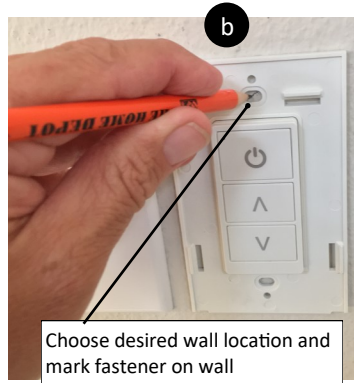
# 21

## Install Remote to Wall (Optional)

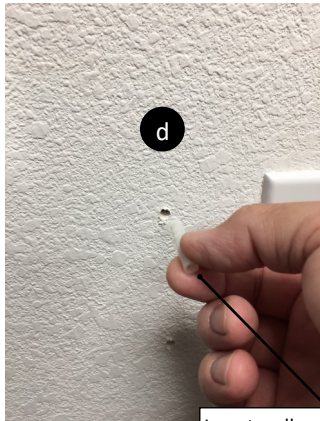
The remote control can be left on a counter or table, or can be fastened to a wall.



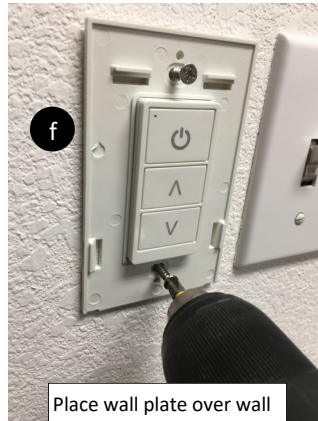
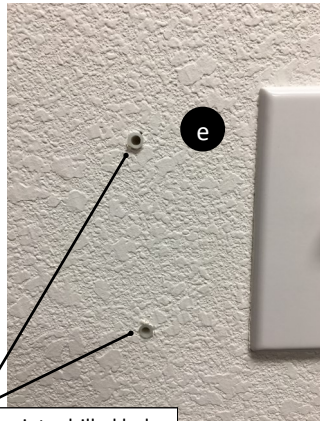
Remove remote from packaging



Drill marked fastener locations



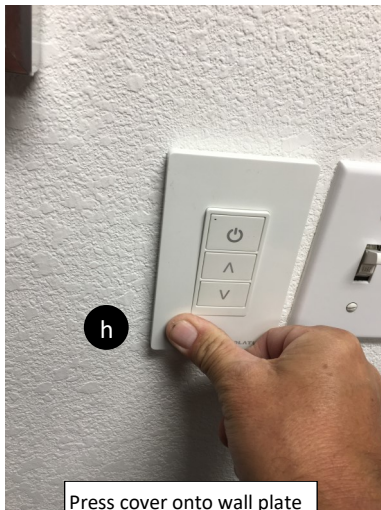
Insert wall anchors into drilled holes



Place wall plate over wall anchors and fasten to wall



Place cover over wall plate



Press cover onto wall plate until it snaps into place



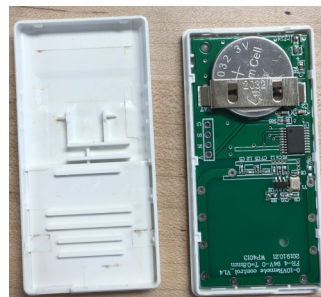
The remote can be pulled out of the wall plate if desired



# 22

## Replace Remote Battery

Use 2032 coin cell battery





Solatube International, Inc.,  
2210 Oak Ridge Way, Vista CA 92081-8341  
Phone (800) 966-7652 • Fax (760) 599-5181  
[www.solatube.com](http://www.solatube.com) Part No. 930302 v1.0