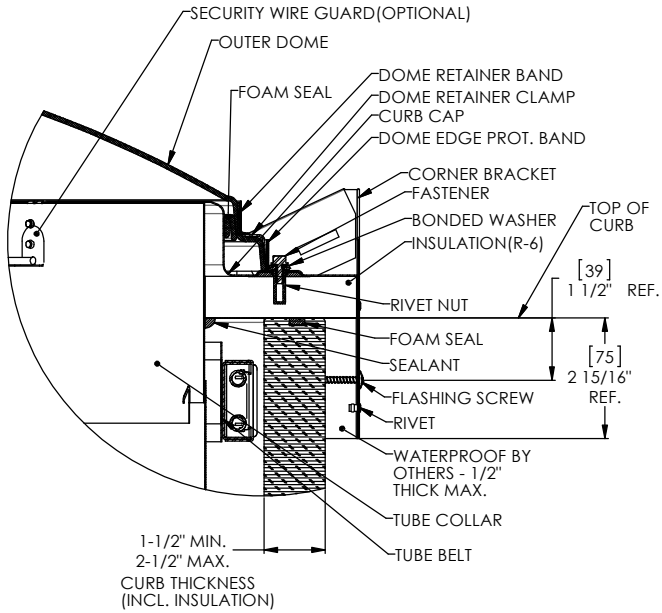
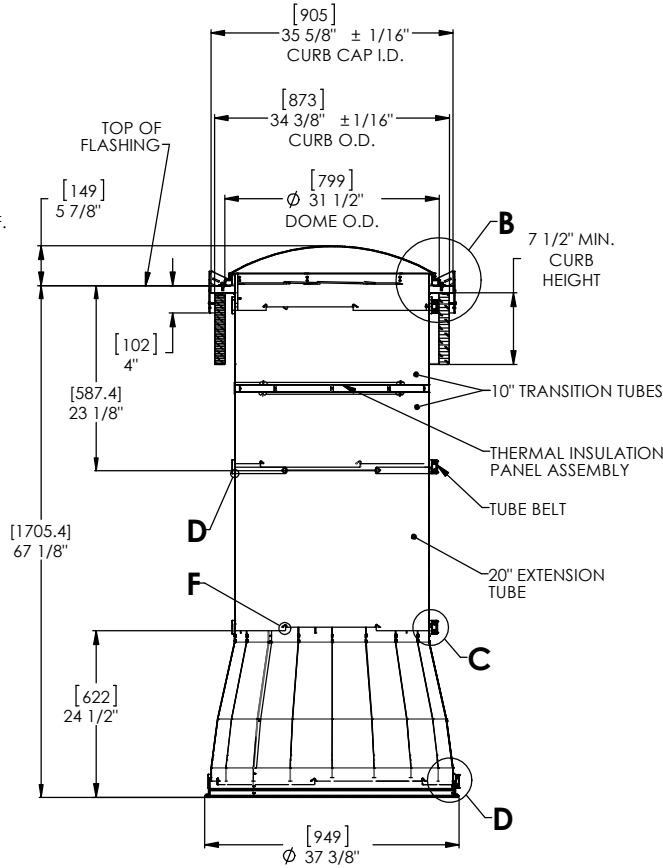


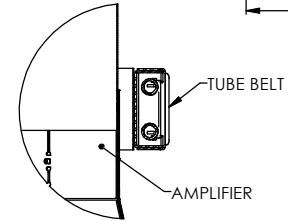
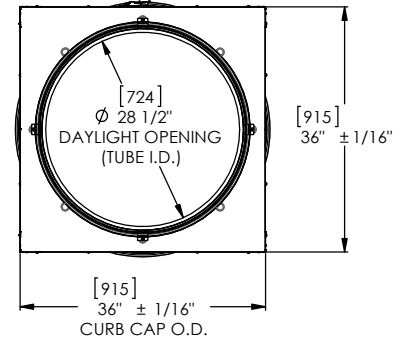
**SOLATUBE M74 DS-O-DP-FC-TIP-A
(29 IN / 740 MM)
CURB CAP/THERMAL INSULATION PANEL
OPEN CEILING**



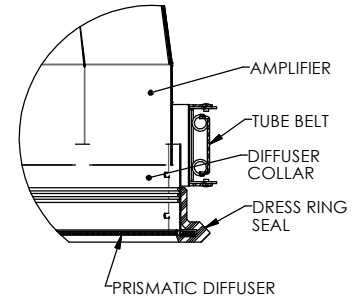
**DETAIL B
SCALE 3 : 1**



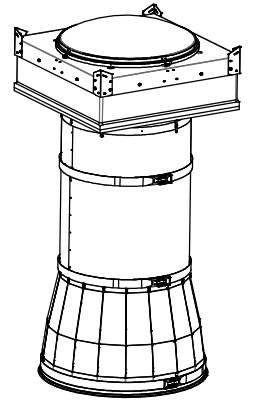
SECTION A-A



**DETAIL C
SCALE 3 : 1**

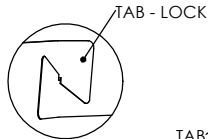


**DETAIL D
SCALE 3 : 1**

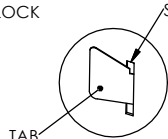


NOTES:

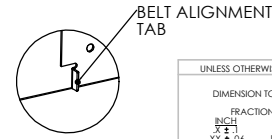
- STRUCTURAL ELEMENTS (PLYWOOD, RAFTERS, DRYWALL ETC.) BY OTHERS & SHOWN FOR REFERENCE ONLY.
- DIMENSIONS IN BRACKETS ARE METRIC UNLESS OTHERWISE SPECIFIED.
- 6" MIN CLEARANCE SHOULD BE MAINTAINED FROM ALL SOLATUBE COMPONENTS AND OTHER PLENUM COMPONENTS.
- CURB CORNER TO CORNER MEASUREMENT SHALL BE EQUIVALENT TO WITHIN 3/32".



**DETAIL E
SCALE 6 : 1**



**DETAIL F
SCALE 6 : 1**



**DETAIL D
SCALE 6 : 1**

UNLESS OTHERWISE SPECIFIED:		 2215 DAK ROOSE WAY COSTA MESA, CALIFORNIA 92626-1341 PH (714) 971-4400	
DIMENSION TOLERANCE		SOLATUBE INTERNATIONAL, INC. COPYRIGHT 2023 WWW.SOLATUBE.COM	
FRACTIONS ± 1/4"		DRAWN BY	DATE
INCH ± 0.0625"	MILLIMETER ± 0.25	CHECKED BY	DATE
XX ± 0.6	(XX) ± 1.5	APPROVED BY	DATE
DO NOT SCALE DRAWING			
TITLE:		M74 DS CURB MOUNT OPEN CEILING	
SIZE	DWG. NO.	REV	
D	M74DS-O-DP-FC-TIP-A	2	
SCALE: 1:1		SHEET 1 OF 1	