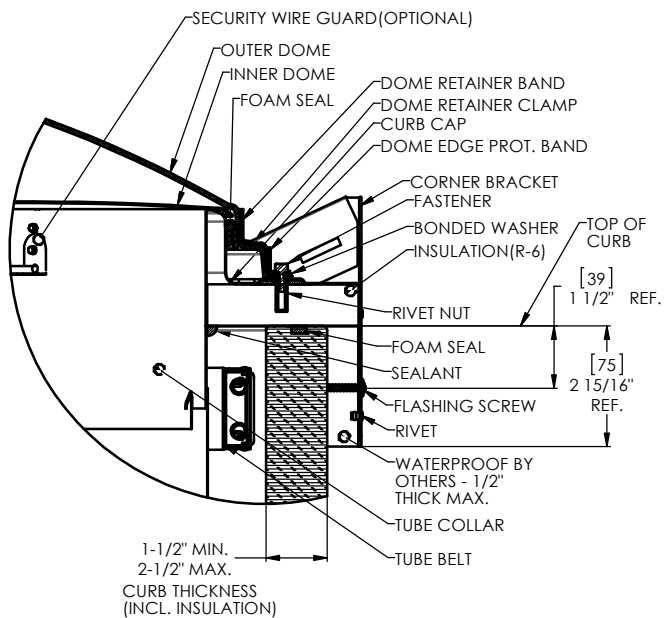
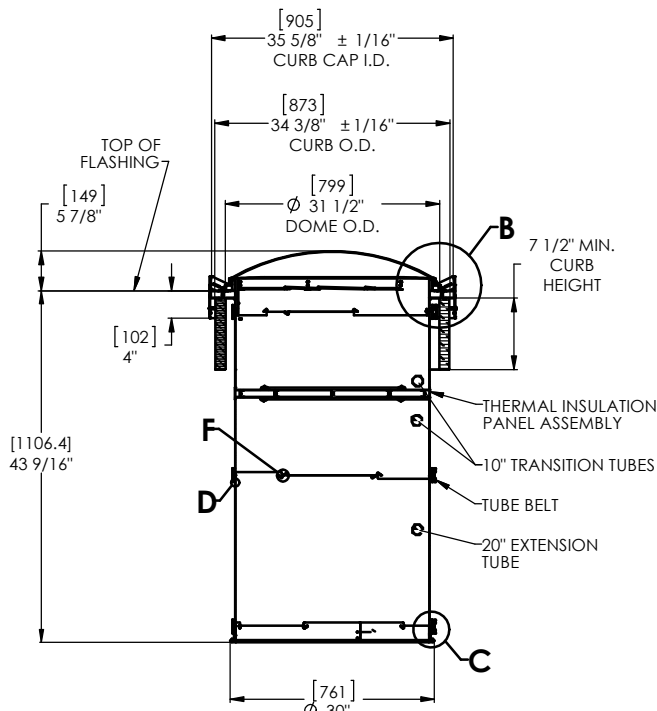


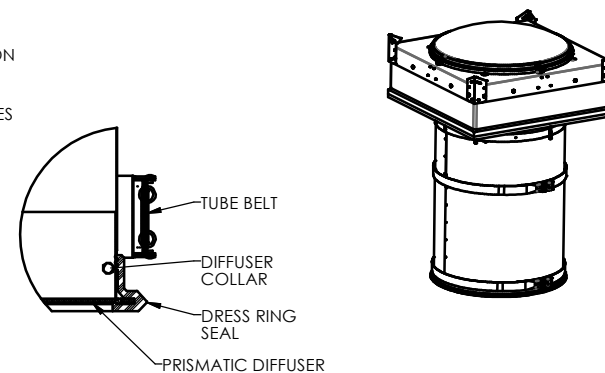
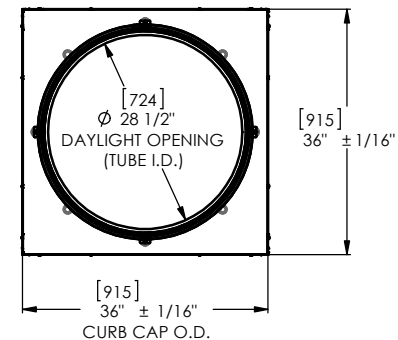
**SOLATUBE M74 DS-O-DPP-FC-TIP-B  
(29 IN / 740 MM)  
CURB CAP/THERMAL INSULATION PANEL  
OPEN CEILING**



**DETAIL B  
SCALE 3 : 1**



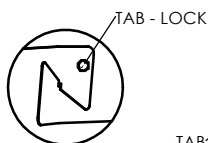
**SECTION A-A**



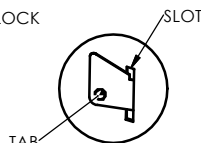
**DETAIL C  
SCALE 3 : 1**

**NOTES:**

- STRUCTURAL ELEMENTS (PLYWOOD, RAFTERS, DRYWALL ETC.) BY OTHERS & SHOWN FOR REFERENCE ONLY.
- DIMENSIONS IN BRACKETS ARE METRIC UNLESS OTHERWISE SPECIFIED.
- 6" MIN CLEARANCE SHOULD BE MAINTAINED FROM ALL SOLATUBE COMPONENTS AND OTHER PLENUM COMPONENTS.
- CURB CORNER TO CORNER MEASUREMENT SHALL BE EQUIVALENT TO WITHIN 3/32".



**DETAIL E  
SCALE 6 : 1**



**DETAIL F  
SCALE 6 : 1**



**DETAIL D  
SCALE 6 : 1**

UNLESS OTHERWISE SPECIFIED:		 2215 DAK ROSSIE WAY DIGITAL, CALIFORNIA, 92081-8311 PH (760) 971-4400	
DIMENSION TOLERANCE FRACTIONS ± 1/8" INCH ± .015" MILLIMETER ± .25 XX ± .06 (XX) ± .13		SOLATUBE INTERNATIONAL, INC. COPYRIGHT 2023 WWW.SOLATUBE.COM	
MATERIAL		DRAWN BY	DATE
FINISH		CHECKED BY	DATE
DO NOT SCALE DRAWING		APPROVED BY	DATE
TITLE:		<b>M74 DS CURB MOUNT OPEN CEILING</b>	
SIZE	DWG. NO.	REV	
D	M74 DS-O-DPP-FC-TIP-B	2	
SCALE: 1:2		SHEET 1 OF 1	