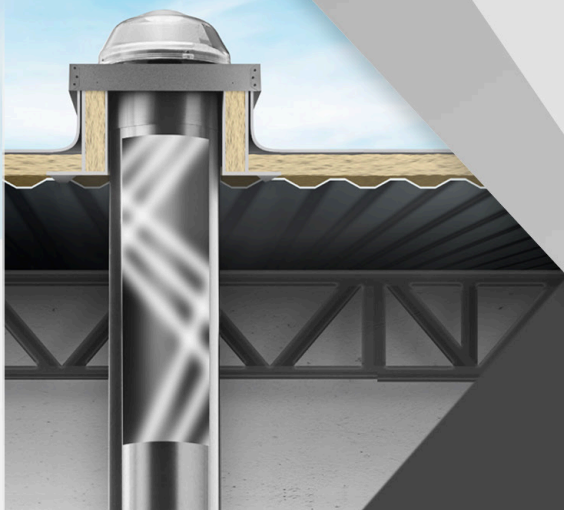
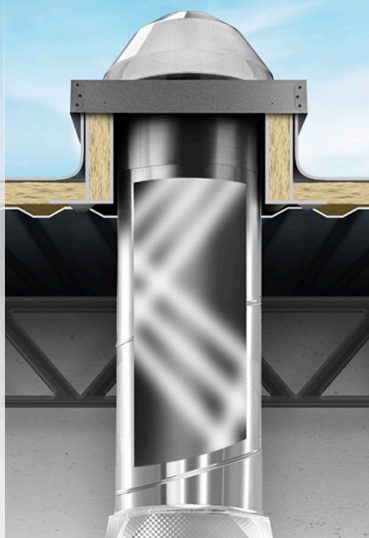
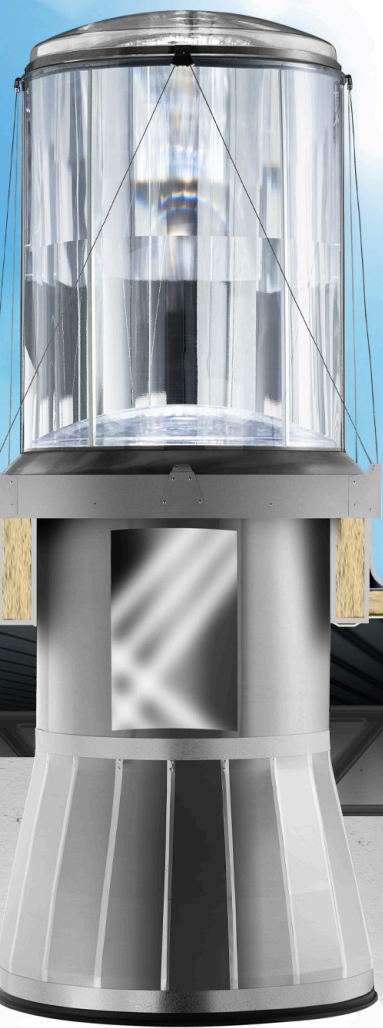


Product Guide

Tubular Daylighting Technologies
for Commercial Spaces



SOLATUBE
COMMERCIAL

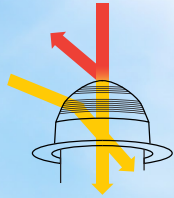
Discover the technology that changed daylighting.

Capture

Raybender® Technology

A patented daylight-capturing dome lens that:

- Redirects low-angle sunlight
- Rejects overpowering summer sunlight
- Provides consistent daylighting through the year



LightTracker™ Reflector

An innovative in-dome reflector that:

- Redirects low-angle winter sunlight
- Increases light input for greater light output
- Delivers unsurpassed year-round performance

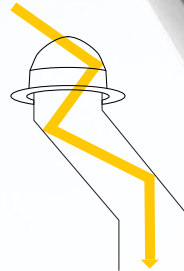


Transfer

Spectralight® Infinity

Tubing made of the world's most reflective material that:

- Offers the highest Specular Reflectivity up to 99.7%
- Provides the purest color rendition possible so colors are truer and brighter
- Long tube runs possible, including multistory and 90 degree turns with minimal light loss

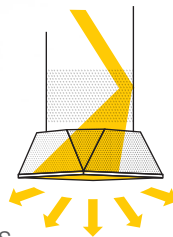


Deliver

Optical Lenses

New DaylightShaping™ Lens Technology

- Ability to direct light distribution for different visual effects
- Provide superior visual comfort



Daylight Dimmer

Adjusts daylight levels at the touch of a button



Thermal Control

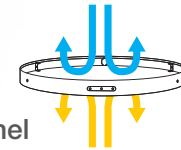
INFRAREDUCTION™ Technology

A technology integrated into Spectralight® Infinity tubing that uses a proprietary process to filter out infrared wavelengths and minimize solar heat gain.



Thermal Insulation Panel

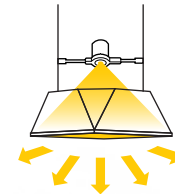
Provides unmatched thermal performance. Two climate controlled discs and a thermal break prevent conductive and convective heat transfer.



Integration

Integrated LED Light Kit

Allows integration of traditional light for a cleaner ceiling appearance and nighttime illumination from a single fixture.

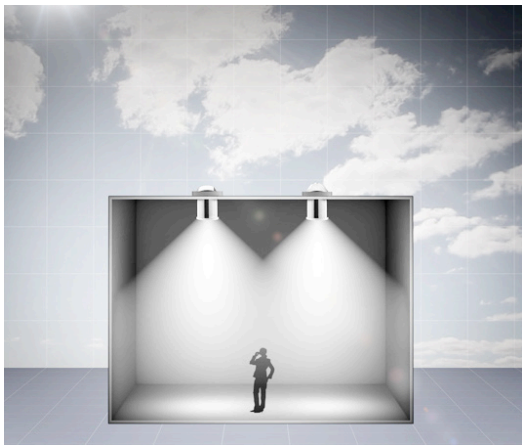


The right products for any size space.



SkyVault® Series p 4-7

Large Tubes for Large Spaces



SolaMaster® Series p 8-11

Medium Spaces, Maximum Versatility



Brighten Up® Series p 12-15

Big Impact for Small Areas

SkyVault Series

Large Tubes for Large Spaces

The SkyVault Series is a line of modular, high output tubular daylighting devices that deliver massive amounts of daylight to large volume spaces with high, open ceilings.

The beauty of SkyVault is that it's not just one size fits all. Varying combinations of domes and collectors capture daylight and large extension tubes transfer it to an optical diffuser. Daylight can be delivered deeper into the building with the use of an optional Amplifier. The SkyVault Series is a configurable, modular, high-output solution for any large-volume space.

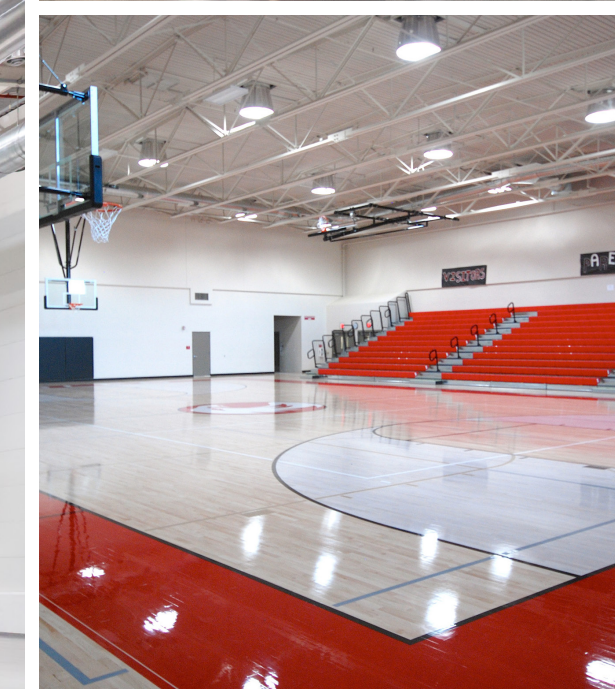
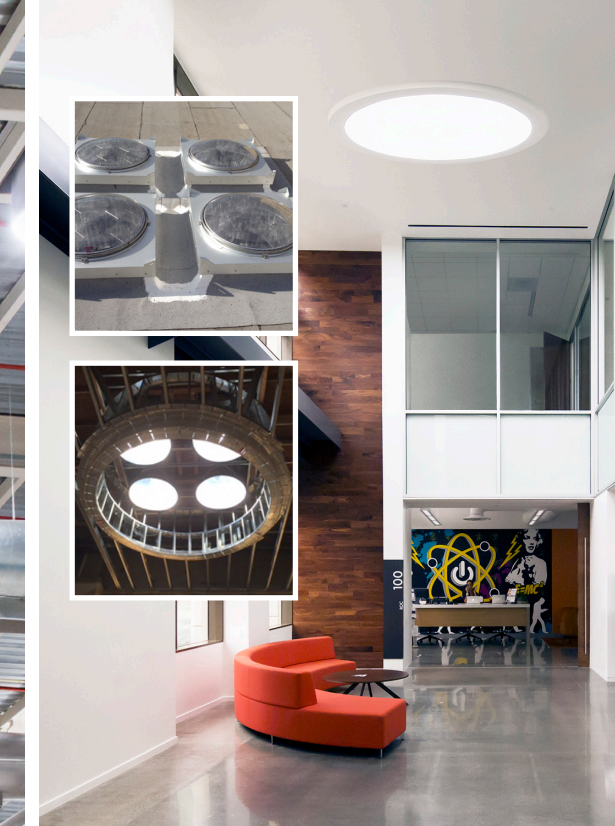
INDUSTRIAL

SPORTS ARENAS

AIRPORTS

CONVENTION CENTERS

BIG BOX RETAIL



SkyVault Series

Step
1

Start with the Core

Our largest tubular daylighting device, the SkyVault Series has the M74 DS at its core with 29" diameter tubes that extend up to 100 feet to fill the largest spaces with natural light.

Tube diameter ≈29 in. (736 mm)
Potential tube length ≈100 ft. (30 m)



M74 Daylighting System

Step
2

Top Assemblies: Massive Sunlight Capture

It all starts with standard domes that are available in both single- and dual-glazed configurations with optional security guards. The light capture really increases with the SkyVault Collector that redirects low-angle light downward while filtering out the heat from infrared wavelengths. All top assemblies are supplied pre-assembled on a curb-mounted cap.



Single-Glazed Dome Assembly
(Dual-Glazed Configuration Available)



Single-Glazed Dome Assembly
with Optional Security Guard
(Dual-Glazed Configuration Available)



SkyVault Collector
can be Added to
Single or Dual-Glazed
Base Unit

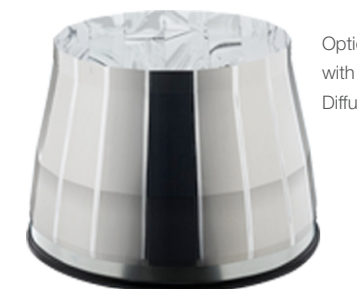
Step
3

Bottom Assemblies: Deep Delivery

The M74 DS uses unique bottom assembly components to deliver maximum daylight in high-bay applications with the prismatic diffuser and the optional Amplifier, which focuses daylight all the way down to the task area.



Standard Prismatic
Diffuser



Optional Amplifier
with Prismatic
Diffuser

Step
4

All the Accessories for Big Impact

The SkyVault Series offers a Thermal Insulation Panel to minimize the thermal impact to the building, as well as a 0-10v Daylight Dimmer to control the levels of daylight in the space.



Thermal Insulation Panel



Daylight Dimmer

SolaMaster Series

Medium Spaces, Maximum Versatility

The Solamaster Series is our flagship product for common commercial applications with ceiling heights from 8 ft. to 30 ft. This product has been used to daylight thousands of applications worldwide ranging from schools to offices to grocery stores.

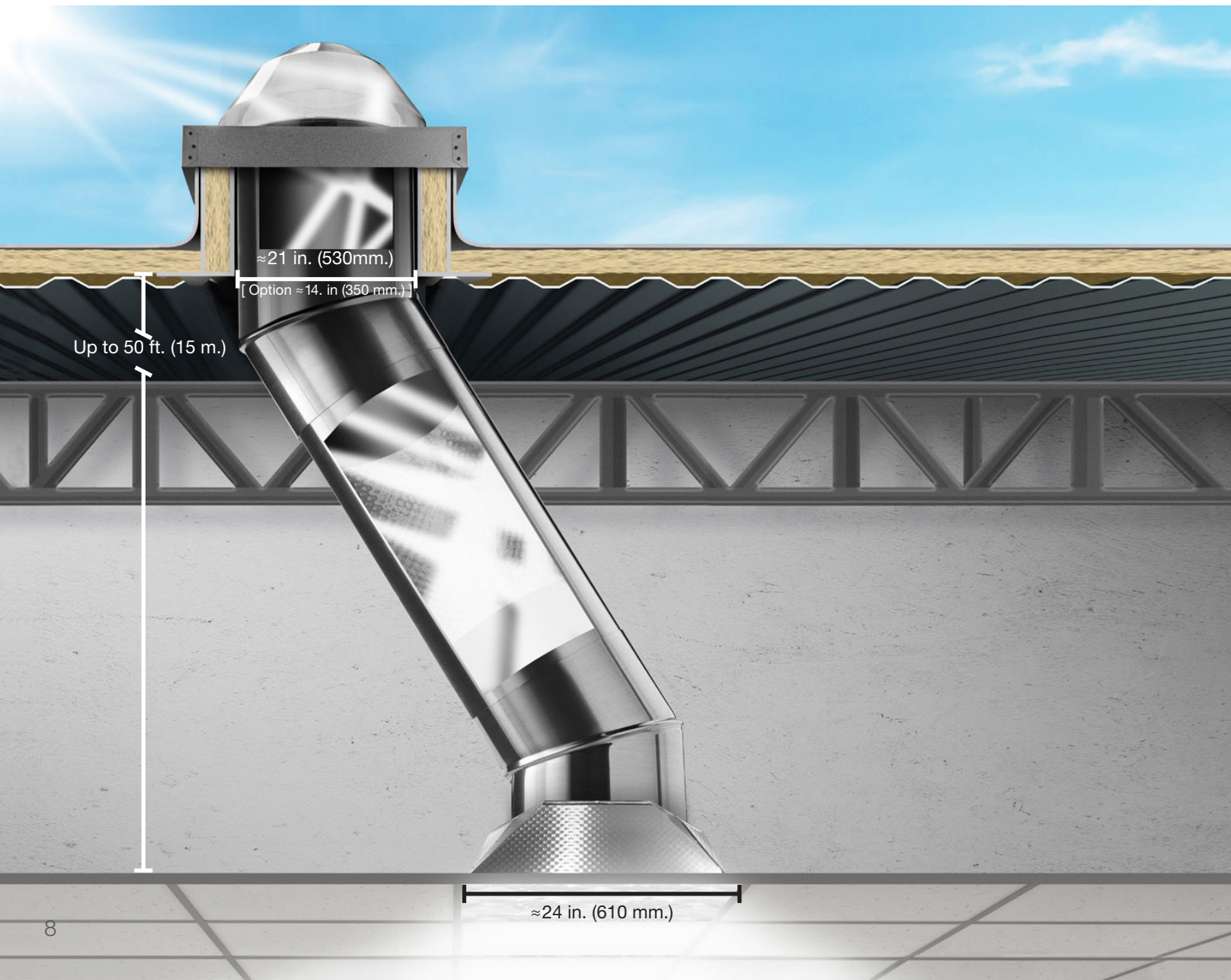
CLASSROOMS

OFFICE SPACE

RETAIL

MEDICAL

HOSPITALITY



SolaMaster Series

Step 1

SolaMaster products provide the versatility for numerous applications and sunlight conditions. Choose from three different models, varying extension tubing configurations (including angle adaptors), and open or closed ceiling options.

A. Choose your dome model



750 DS
is designed to deliver consistent light output throughout the day. It effectively captures low-angle rays in the morning and late afternoon, but rejects midday summer rays to prevent glare, overlighting and overheating.

- Tube diameter ≈21 in. (530 mm)
- Potential tube length ≈50 ft. (15 m)



330 DS
is designed to maximize light output at any time of day. It effectively captures low-angle rays in the morning and late afternoon, and maximizes midday sunlight for powerful performance.

- Tube diameter ≈21 in. (530 mm)
- Potential tube length ≈50 ft. (15 m)



300 DS
is an optimal solution for applications where roof or ceiling framing only allows a 14 inch diameter tube or for lower ceiling heights. Available only in closed ceiling applications.

- Tube diameter ≈14 in. (350 mm)
- Potential tube length ≈30 ft. (9 m)



B. Choose a ceiling option for your application



Open Ceiling/Round



Closed Ceiling/Round

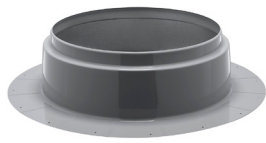


Closed Ceiling/Square

Step 2

Curbs & Flashings: Mounting for Any Roof

Whatever your roof, whatever your application, Solatube has the component to meet all your needs for a weatherproof installation.



Self Mounted Flashing



Curb Mounted Cap

Standard insulation curbs available.

Step 3

Diffuser Options to Match Your Design

Diffuser options enhance the look of your interior while delivering highly diffuse, evenly-spread natural light. OptiView® Shaping Diffusers achieve differing light distribution for specific visual effects. Prismatic diffusers replicate the look of traditional troffers and blend into virtually any design.

All diffusers snap on to the bottom of the tube for easy installation.

OptiView® Superwide



OptiView® Wide



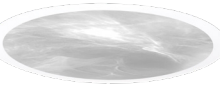
OptiView® Narrow



OptiView® Shaping Diffusers



Prismatic Diffusers



Step 4

Accessories for Total Daylighting Control

The SolaMaster Series offers a thermal insulation panel to minimize the thermal impact to the building, as well as a 0-10v daylight dimmer to control the levels of daylight in the space. And now, with our integrated LED featuring up to 10,000 lumens, you can keep your ceiling uncluttered while achieving your desired level of illumination, day or night.



Integrated LED Light Kit
Available in 3,250 lumens for 300 DS and 10,000 lumens for the 330 DS / 750 DS



Thermal Insulation Panel



Daylight Dimmer

Brighten Up Series

Big Impact for Small Spaces

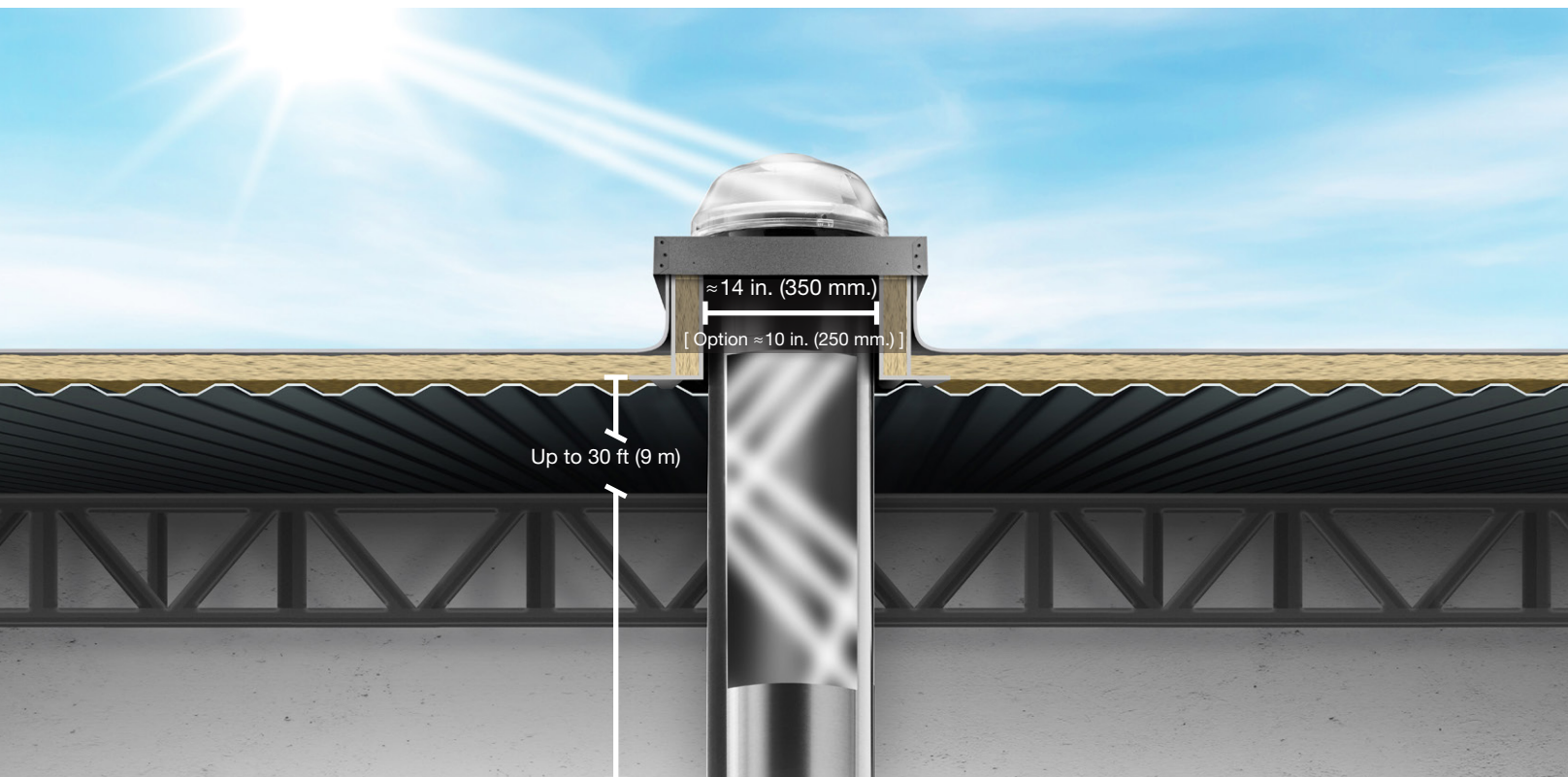
Residential and smaller commercial spaces with corridors, restrooms and alcoves often suffer from lack of natural light. Solatube's Brighten Up Series is the perfect solution for bringing daylight to unexpected, hard-to-reach areas.

CORRIDORS

HALLWAYS

RESTROOMS

RESIDENTIAL



[option ≈10 in. (250mm)]



Brighten Up Series

Step
1

Bringing New Light to Dark Spaces.

The Brighten Up Series offers two different tubular daylighting devices, 160 DS and 290 DS, both of which are great solutions for small areas with ceiling heights under 10 ft. or where structural issues or aesthetic goals may limit the use of larger diameter tubes. And each can be utilized with hard, suspended or open ceilings.



290 Daylighting System

The Solatube 290 DS is ideal for filling small spaces with natural light like bathrooms, corridors, and coffee nooks.

- Tube diameter ≈14 in. (350 mm)
- Potential tube length ≈30 ft. (9 m)



160 Daylighting System

The Solatube 160 DS is ideal for illuminating smaller spaces like alcoves and hallways with soft, comfortable natural light.

- Tube diameter ≈10 in. (250 mm)
- Potential tube length ≈20 ft. (6 m)

Step
2

Mounting for Any Roof

The Brighten Up Series has leak-proof flashings to mount its domes on any roof type as well as curb caps and self-flashings for both pitched and non-pitched roofs.



Pitched



Flat



Curb Cap

Step
3

Diffusers for Beautiful Delivery

The Brighten Up Series offers a variety of diffuser options, which can be used with hard, suspended or open ceilings for different aesthetics.

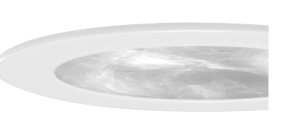
Classic Vusion



JustFrost



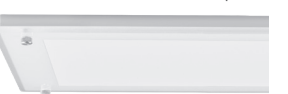
OptiView® Shaping Diffusers



TierDrop



JustFrost Square



Step
4

Add-Ons & Accessories

From daylight dimming to integrated electric lights, you get the options you need to completely control your daylighting environment.



Integrated LED Light Kit
3,250 raw lumens only available
for 290 DS model

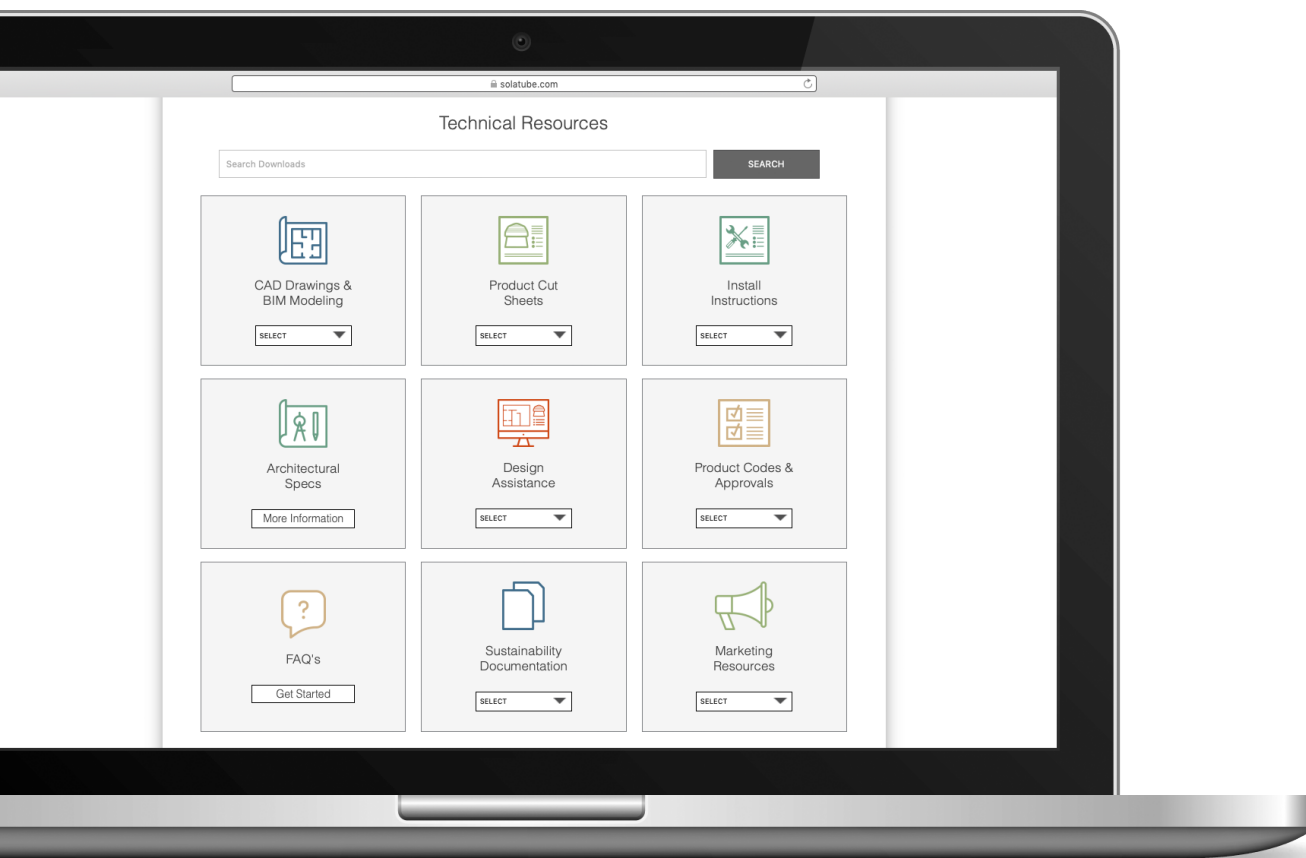


Daylight Dimmer

Technical Resources for You

Solatube provides all the Technical Resources needed to select, configure, install and promote the optimal Solatube product solution. This includes Architectural Specs, CAD drawings, cut sheets, sustainability information and more. Just search by technical categories or product categories to quickly find the resources you're looking for.

Go to **solatube.com/Technical-Resources** for more details



Codes and Approvals

Rest assured that the Solatube Daylighting System can be used in your project without any hassles. Solatube Daylighting Systems have been approved by all major building product approval agencies: • International Building Code (IBC) 2015, 2018, 2021 • International Residential Code (IRC) 2015, 2018, 2021 • A440-05 & A440-11 (AAMA/WDMA/CSA) • Florida Building Code/High Velocity Hurricane Zone • Code Compliance Research Report (CCRR) • City of Los Angeles Research Report • Texas Department of Insurance • Energy Star®/NFRC • UL • TUV



Solatube International, Inc. | 2210 Oak Ridge Way | Vista, CA 92081
888.765.2882 | ©2022 Solatube International, Inc.