



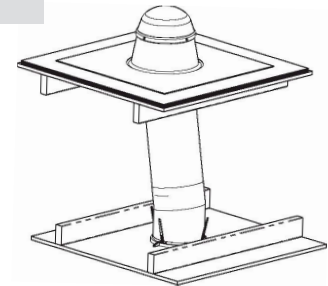
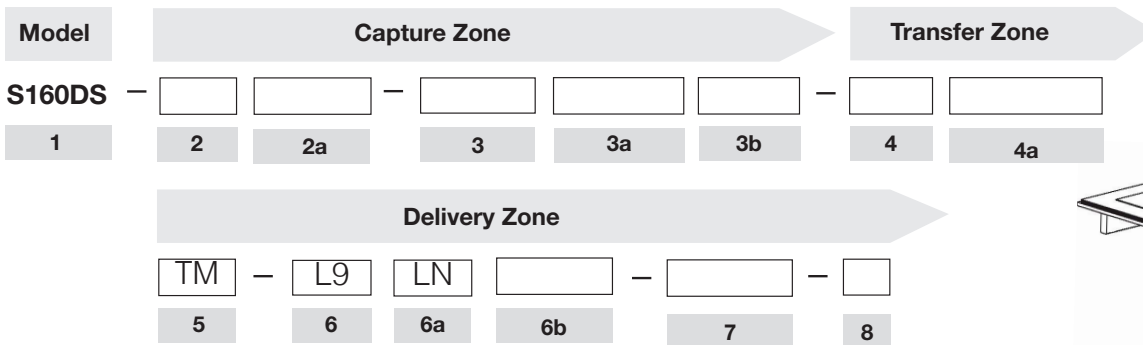
Model: Solatube 160 DS Square (10 in. /250 mm Daylighting System)

Project: _____

Location: _____

Type: _____

Product Specifications Appear in CSI Division 08, Section 08 62 23. For budgeting and quotations use only. Qty: _____



1 Model
160 DS Brighten Up® Solatube 160 DS (10 in./250 mm Daylighting System)

Capture Zone

2 Domes
DA Acrylic Dome **DAI** Acrylic Dome + Shock Inner Dome (Acrylic)
Required for High Velocity Hurricane Zones

2a Dome Options (Leave blank if not desired)
PB Dome Edge Protection Band **FG** Rooftop Fire Glazing
Required for High Fire Zones

3 Flashings

FP 4 in. (102 mm) Pitched Metal, Self Mounted 	F4 4 in. (102 mm) Flat/No Pitch Metal, Self Mounted 	F6 6 in. (152 mm) Flat/No Pitch Metal, Self Mounted 
FPT 4 in. (102 mm) Tile Roof, Pitched Metal Flashing 	FT 4 in. (102 mm) Tile Roof, No Pitch Metal Flashing 	FC Curb Cap (curb by others) 

3a Flashing Options (Leave blank if not desired)

T2* Roof Flashing Turret Extension 2 in. (51 mm)	T36* Roof Flashing Turret Extension 36 in. (914 mm)
T4* Roof Flashing Turret Extension 4 in. (102 mm)	T48* Roof Flashing Turret Extension 48 in. (1219 mm)
T12* Roof Flashing Turret Extension 12 in. (305 mm)	MR Metal Roof Installation Kit
T24* Roof Flashing Turret Extension 24 in. (610 mm)	

* Specify additional extension tubes in #4

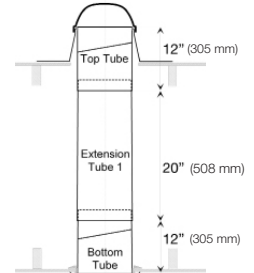
3b Insulation Options (Leave blank if not desired)
FI Flashing Insulator **TIP** Thermal Insulation Panel

Transfer Zone

4 Extension Tubes Required

Run measured from top of roof deck to bottom of ceiling plane along centerline of tubing.

- | | |
|--|--|
| E0 Base Kit, No Tubes – Max Run = 22 in. (559 mm) | E7 Seven Extension Tubes – Max Run = 176 in. (4470 mm) |
| E1 One Extension Tube – Max Run = 44 in. (1118 mm) | E8 Eight Extension Tubes – Max Run = 198 in. (5029 mm) |
| E2 Two Extension Tubes – Max Run = 66 in. (1676 mm) | E9 Nine Extension Tubes – Max Run = 220 in. (5588 mm) |
| E3 Three Extension Tubes – Max Run = 88 in. (2235 mm) | E10 Ten Extension Tubes – Max Run = 242 in. (6147 mm) |
| E4 Four Extension Tubes – Max Run = 110 in. (2794 mm) | EXX Total Run Length to be Determined by Bidding Contractor |
| E5 Five Extension Tubes – Max Run = 132 in. (3353 mm) | |
| E6 Six Extension Tubes – Max Run = 154 in. (3912 mm) | |



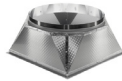
4a Extension Tube Options (Leave blank if not desired)

- | | |
|---|-----------------------------------|
| A1 One 0-90 Degree Extension Tube (Angle Adapter) | E Wire Suspension Kit |
| A2 Two 0-90 Degree Extension Tubes (Angle Adapter) | SCG Severe Climate Glazing |

Delivery Zone

5 Bottom Assembly

- TM** Transition Square Box (Metal)



6 Diffusers/Decorative Fixtures

- L9** JustFrost Decorative Fixture



6a Effect Lenses

- LN** Natural Effect Lens

6b Options (Leave blank if not desired)

- | | |
|--|---------------------------------|
| INC Universal Light Add-On Kit with Medium Screw Base (Accepts two 23W Maximum Fluorescent Lamp, Medium Base, Total Maximum Length 4 3/4 in. (120 mm) - Not Included) 110 V | D1 0-10V Daylight Dimmer |
|--|---------------------------------|

7 Accessories (Order separately.)

- S1** Low voltage 0-10V switch (white) required to operate Solatube 010V Daylight Dimmers. Only one switch per forty-eight (48) synchronously controlled dimmers. (For 'D1' only) Note: For use when no controls have been specified and customer is looking for an off-the-shelf solution.
- TR20** UL Listed Class 2 Transformer 24 VAC, Rated 20 VA (For 'D1' only)
- TR96** UL Listed Class 2 Transformer 24 VAC, Rated 96 VA (For 'D1' only)

8 Measurement Standard

- M** Metric **I** Imperial

Example

S160DS-DA-F6-E3-L9-LN-INC-D1-M

Brighten Up® Series Solatube 160 DS (10 in./250 mm Daylighting System), Acrylic Dome, 6 in. (152 mm) high Flat/No Pitch Self Mounted Flashing, 3 Extension Tubes, JustFrost Decorative Fixture, Natural Effect Lens, Universal Light Add-On Kit and Daylight Dimmer. For metric installations.