



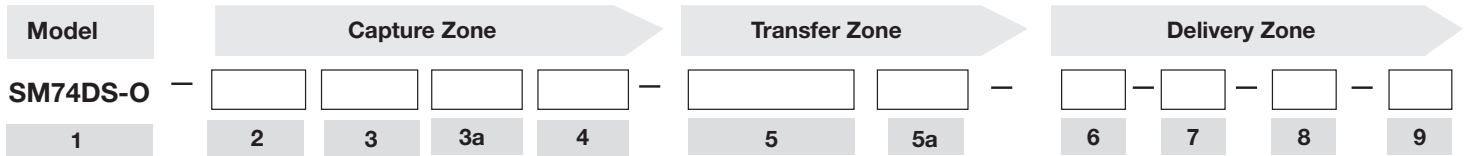
# Model: Solatube SkyVault Series (29 in./740 mm Daylighting System)

Project: \_\_\_\_\_

Location: \_\_\_\_\_

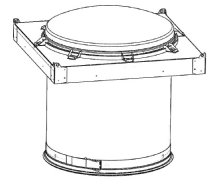
Type: \_\_\_\_\_

Product Specifications Appear in CSI Division 08, Section 08 62 23. For budgeting and quotations use only. Qty: \_\_\_\_\_



## 1 Model

**Solatube® M74 DS** Solatube M74 DS (29 in./740 mm Daylighting System)  
Open Ceiling



## Capture Zone

### 2 Collector (Leave blank if not desired)

**C** Collector with Raybender HD and LightTracker Technologies



### 3 Domes

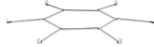
**DP** Polycarbonate Dome

**DPP** Polycarbonate Outer Dome + PETG Inner Dome



### 3a Dome Options (Leave blank if not desired)

**SG** Security Guard\*



\*Factory Installed

## 4 Flashings

**FC** Curb Cap  
\*Dome edge protection band included with the dome



**C12\*\*** Metal Insulated Curb  
35 in. x 35 in. x 12 in.  
(889 mm x 889 mm x 305 mm)



**C16\*\*** Metal Insulated Curb  
35 in. x 35 in. x 16 in.  
(889 mm x 889 mm x 406.5 mm)



**C14\*\*** Metal Insulated Curb  
35 in. x 35 in. x 14 in.  
(889 mm x 889 mm x 355.5 mm)



**C20\*\*** Metal Insulated Curb  
35 in. x 35 in. x 20 in.  
(889 mm x 889 mm x 508 mm)



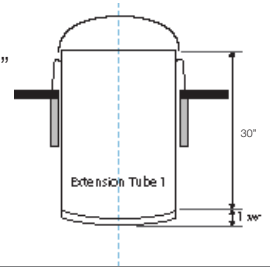
\*\* Curbs designed for single-ply roofing, lightweight fill or tapered insulation low slope roof types.

## Transfer Zone

### 5 Extension Tubes Required\*

Run measured from top of flashing to diffuser along centerline of tubing using 24" lengths. See 5a for optional 48" length.

- |  |  |
|--|--|
| <b>E1</b> One Extension Tube – Max Run = ~30"    | <b>E7</b> Seven Extension Tubes – Max Run = ~168"                  |
| <b>E2</b> Two Extension Tubes – Max Run = ~53"   | <b>E8</b> Eight Extension Tubes – Max Run = ~191"                  |
| <b>E3</b> Three Extension Tubes – Max Run = ~76" | <b>E9</b> Nine Extension Tubes – Max Run = ~214"                   |
| <b>E4</b> Four Extension Tubes – Max Run = ~99"  | <b>E10</b> Ten Extension Tubes – Max Run = ~237"                   |
| <b>E5</b> Five Extension Tubes – Max Run = ~122" | <b>EXX</b> Total Run Length to be Determined by Bidding Contractor |
| <b>E6</b> Six Extension Tubes – Max Run = ~145"  |  |



### 5a Extension Tube Options (Leave blank if not desired)

\*At least one 24" or 48" extension tube required for diffuser

- EL** Optional 48" Extension Tube (Substitute one 48" for two 24" above)  
**R** Trim Ring  
**TIP** Thermal Insulation Panel and Nominal 24" Extension Tube (2 x 12" transition tubes\*)  
\*2 x 12" transition tubes replace 1 x 24" extension tube.



## Delivery Zone

### 6 Options (Leave blank if not desired)

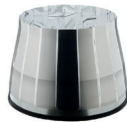
- D1** 0-10v Daylight Dimmer and Nominal 24" Extension Tube (2 x 12" transition tubes\*)  
\*2 x 12" transition tubes replace 1 x 24" extension tube.

### 7 Bottom Assembly

- B** Base Unit



- A** Amplifier\*



\*The Amplifier mounts to the bottom extension tube, adding an additional 23.7" to the overall tube run.

### 8 Diffuser Lens

- L2** Prismatic Diffuser



### 9 Measurement Standard

- M** Metric      **I** Imperial

### Accessories (Optional. Order separately)

\*transformer for 0-10V Dimmer

- S1** Low voltage 0-10V switch (white) required to operate Solatube 0-10V Daylight Dimmers. Only one switch is required per forty-eight (48) synchronously controlled dimmers. (For 'D1' only) Note: For use when no controls have been specified and customer is looking for an off-the-shelf solution. If different controls have been specified please source those from others.

**TR20** UL Listed Class 2 Transformer 24 VAC, Rated 20 VA

**TR96** UL Listed Class 2 Transformer 24 VAC, Rated 96 VA

## Example

### SM74DS-O-DPP-FC-E2-B-L2-M

Solatube® SkyVault Series M74DS-O (29 in./740 mm Daylighting System), Polycarbonate Outer Dome + PETG Inner Dome, Two Extension Tubes, Base Unit and Prismatic® Diffuser. For metric installations.