

Project:
Angles Beauty Care Group
Poway, CA

Building Type: Office/Warehouse

When designing its new Southern California headquarters, Angles Beauty Care Group, a professional beauty care company, wanted to incorporate natural lighting in order to not only highlight the interior design of the offices, but to showcase their products and create a stylish, fashion-conscious ambiance. Angles owns and operates three Collections Salons & Day Spas and three Angles Salons in Southern California, as well as HAI (Hair Art and Info), which designs and manufactures a complete line of fine ceramic styling tools. Solatube International, Inc. demonstrated how Angles could achieve its goals and more.

Objective

Integrate daylight to provide perfect color rendition throughout the new Southern California headquarters to dramatically light and accurately portray the effects of the company's beauty care products and services, while at the same time, maximize energy savings through daylight harvesting, reduce utility costs and provide a more natural, healthier work environment for employees.

Products Used

Office Area:

- 2 Solatube 160 DS (10 in/250 mm Daylighting System) with OptiView® Diffusers
- 8 Solatube 290 DS (14 in/350 mm Daylighting System) with OptiView® Diffusers
- 12 Solatube 21-C (21 in/530 mm Daylighting System) with OptiView® Diffusers (9 with Daylight Dimmers)

Warehouse:

- 16 Solatube 21-O (21 in/530 mm Daylighting System) with Prismatic Diffusers

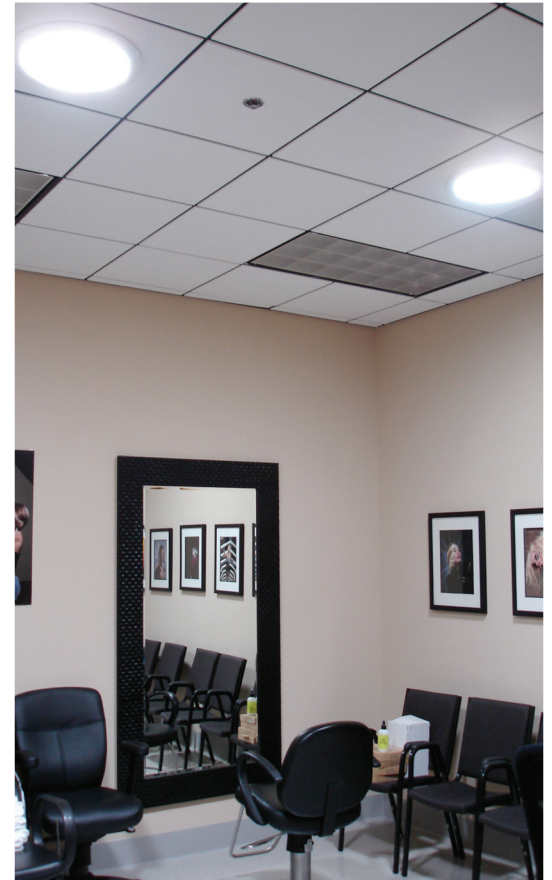
Solution

Solatube Daylighting Systems would ultimately exceed the expectations of the Angles design team. Installed by Collier Norwood, Inc., the Solatube units fully daylight the Angles 8,000sf building (3,500sf office and 4,500sf warehouse). Very little electric lighting (if any) is used on an average day. The Solatube 21-O open ceiling units bring an amazing amount of light to the warehouse and distribution area. Each individual office and the conference room feature Solatubes 21-C units with Daylight Dimmers to offer occupants total control over their work environments. The open office area for the sales department, corridors, restrooms, break room, and copy room are all fully daylight with a combination of all Solatube Daylighting Systems.

Testimonial

"As you can see from the tour of the spaces we are really pleased with the Solatube product. They add natural light, bring the colors to life and will save our company in utility costs. Again, thank you for your assistance in getting this wonderful product into our new corporate office."

Richard Ouellette, C.E.O.



SOLATUBE

Innovation in Daylighting.

